

## KLHL9 antibody

### Product Information

Catalog No.:	FNab04629
Size:	100µg
Form:	liquid
Purification:	Immunogen affinity purified
Purity:	≥95% as determined by SDS-PAGE
Host:	Rabbit
Clonality:	polyclonal
Clone ID:	None
IsoType:	IgG
Storage:	PBS with 0.02% sodium azide and 50% glycerol pH 7.3, -20°C for 12 months(Avoid repeated freeze / thaw cycles.)

### Background

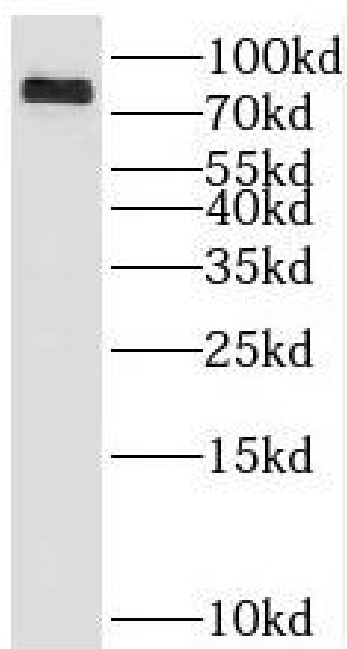
Substrate-specific adapter of a BCR(BTB-CUL3-RBX1) E3 ubiquitin-protein ligase complex required for mitotic progression and cytokinesis. The BCR(KLHL9-KLHL13) E3 ubiquitin ligase complex mediates the ubiquitination of AURKB and controls the dynamic behavior of AURKB on mitotic chromosomes and thereby coordinates faithful mitotic progression and completion of cytokinesis.

### Immunogen information

Immunogen:	kelch-like 9(Drosophila)
Synonyms:	Kelch-like protein 9 KLHL9 KIAA1354
Observed MW:	80 kDa
Uniprot ID :	Q9P2J3

### Application

Reactivity:	Human
Tested Application:	ELISA, WB
Recommended dilution: WB:	1:500-1:2000
Image:	



HeLa cells were subjected to SDS PAGE followed by western blot with FNab04629( KLHL9 Antibody) at dilution of 1:300