

KLHL4 antibody

Product Information

Catalog No.:	FNab04628
Size:	100µg
Form:	liquid
Purification:	Immunogen affinity purified
Purity:	≥95% as determined by SDS-PAGE
Host:	Rabbit
Clonality:	polyclonal
Clone ID:	None
IsoType:	IgG
Storage:	PBS with 0.02% sodium azide and 50% glycerol pH 7.3, -20°C for 12 months(Avoid repeated freeze / thaw cycles.)

Background

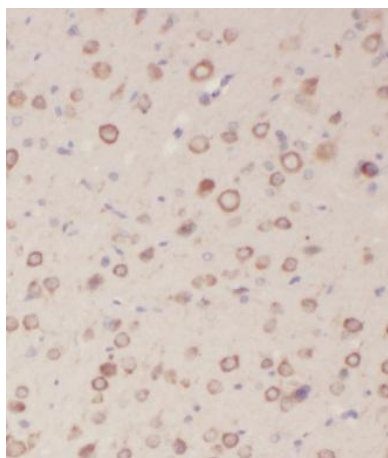
None

Immunogen information

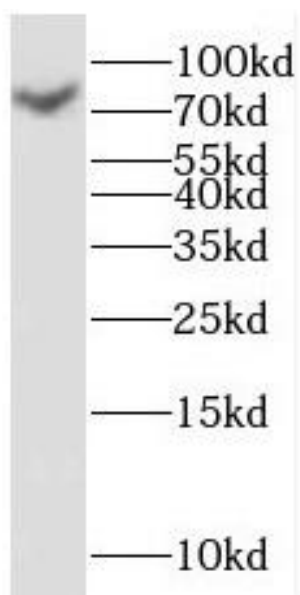
Immunogen:	kelch-like 4(Drosophila)
Synonyms:	Kelch-like protein 4 KLHL4 KIAA1687
Observed MW:	75-80 kDa
Uniprot ID :	Q9C0H6

Application

Reactivity:	Human, Mouse, Rat
Tested Application:	ELISA, WB, IHC
Recommended dilution:	WB: 1:500-1:2000; IHC: 1:20-1:200
Image:	



Immunohistochemistry of paraffin-embedded human brain using FNab04628(KLHL4 antibody) at dilution of 1:50



HeLa cells were subjected to SDS PAGE followed by western blot with FNab04628(KLHL4 antibody) at dilution of 1:600