

KLHL31 antibody

Product Information

Catalog No.:	FNab04624
Size:	100µg
Form:	liquid
Purification:	Immunogen affinity purified
Purity:	≥95% as determined by SDS-PAGE
Host:	Rabbit
Clonality:	polyclonal
Clone ID:	None
IsoType:	IgG
Storage:	PBS with 0.02% sodium azide and 50% glycerol pH 7.3, -20°C for 12 months(Avoid repeated freeze / thaw cycles.)

Background

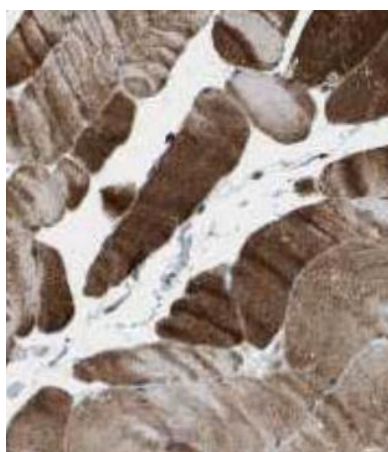
Transcriptional repressor in MAPK/JNK signaling pathway to regulate cellular functions. Overexpression inhibits the transcriptional activities of both the TPA-response element(TRE) and serum response element(SRE).

Immunogen information

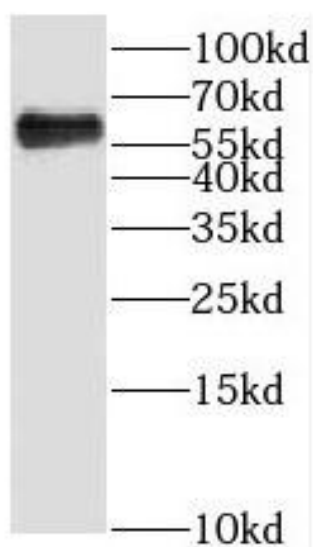
Immunogen:	kelch-like 31(Drosophila)
Synonyms:	Kelch-like protein 31 BTB and kelch domain-containing protein 6 Kelch repeat and BTB domain-containing protein 1 Kelch-like protein KLHL KLHL31 BKLHD6 KBTBD1 KLHL
Observed MW:	60 kDa
Uniprot ID :	Q9H511

Application

Reactivity:	Human, Mouse
Tested Application:	ELISA, WB, IHC, IF
Recommended dilution:	WB: 1:500-1:2000; IHC: 1:20-1:200; IF: 1:20-1:200
Image:	



Immunohistochemistry of paraffin-embedded human skeletal muscle tissue slide using FNab04624(KLHL31 Antibody) at dilution of 1:50



mouse embryo tissue were subjected to SDS PAGE followed by western blot with FNab04624(KLHL31 Antibody) at dilution of 1:1000