

KLHL28 antibody

Product Information

Catalog No.:	FNab04621
Size:	100µg
Form:	liquid
Purification:	Immunogen affinity purified
Purity:	≥95% as determined by SDS-PAGE
Host:	Rabbit
Clonality:	polyclonal
Clone ID:	None
IsoType:	IgG
Storage:	PBS with 0.02% sodium azide and 50% glycerol pH 7.3, -20°C for 12 months(Avoid repeated freeze / thaw cycles.)

Background

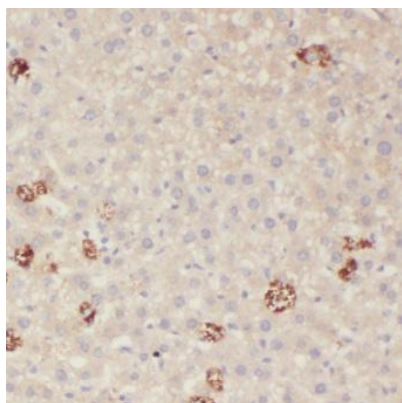
None

Immunogen information

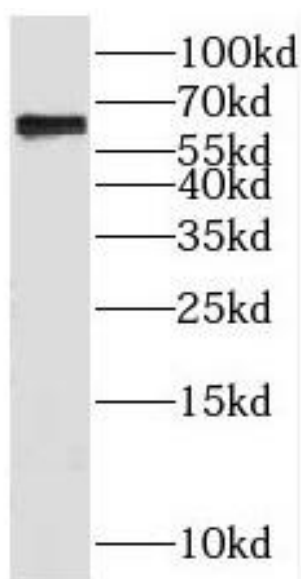
Immunogen:	kelch-like 28(Drosophila)
Synonyms:	Kelch-like protein 28 BTB/POZ domain-containing protein 5 KLHL28 BTBD5
Observed MW:	64 kDa
Uniprot ID :	Q9NXS3

Application

Reactivity:	Human, Mouse
Tested Application:	ELISA, WB, IHC
Recommended dilution:	WB: 1:500-1:2000; IHC: 1:20-1:200
Image:	



Immunohistochemistry of paraffin-embedded human colon tissue slide using FNab04621(KLHL28 Antibody) at dilution of 1:50



Jurkat cells were subjected to SDS PAGE followed by western blot with FNab04621(KLHL28 Antibody) at dilution of 1:300