

KLHL14 antibody

Product Information

Catalog No.:	FNab04613
Size:	100µg
Form:	liquid
Purification:	Immunogen affinity purified
Purity:	≥95% as determined by SDS-PAGE
Host:	Rabbit
Clonality:	polyclonal
Clone ID:	None
IsoType:	IgG
Storage:	PBS with 0.02% sodium azide and 50% glycerol pH 7.3, -20°C for 12 months(Avoid repeated freeze / thaw cycles.)

Background

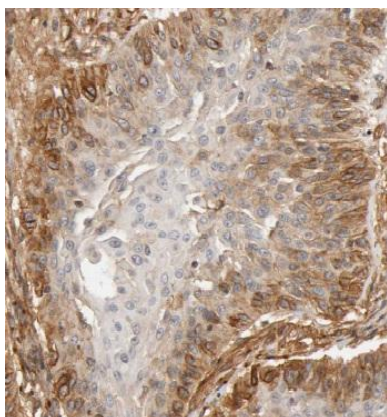
None

Immunogen information

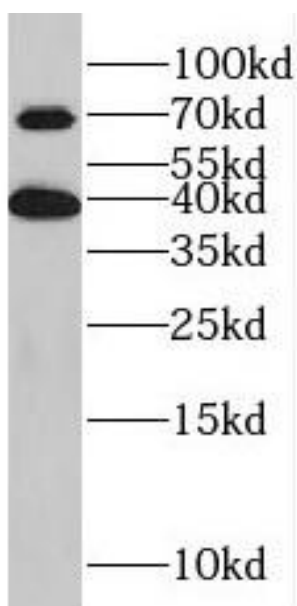
Immunogen:	kelch-like 14(Drosophila)
Synonyms:	Kelch-like protein 14 Protein interactor of Torsin-1A (Printor, Protein interactor of torsinA) KLHL14 KIAA1384
Observed MW:	39 kDa, 70 kDa
Uniprot ID :	Q9P2G3

Application

Reactivity:	Human
Tested Application:	ELISA, WB, IHC
Recommended dilution:	WB: 1:500-1:2000; IHC: 1:20-1:200
Image:	



Immunohistochemistry of paraffin-embedded human cervical cancer tissue slide using FNab04613(KLHL14-Specific Antibody) at dilution of 1:50



PC-3 cells were subjected to SDS PAGE followed by western blot with FNab04613(KLHL14 antibody) at dilution of 1:1000