

## KLHL13 antibody

### Product Information

Catalog No.:	FNab04611
Size:	100µg
Form:	liquid
Purification:	Immunogen affinity purified
Purity:	≥95% as determined by SDS-PAGE
Host:	Rabbit
Clonality:	polyclonal
Clone ID:	None
IsoType:	IgG
Storage:	PBS with 0.02% sodium azide and 50% glycerol pH 7.3, -20°C for 12 months(Avoid repeated freeze / thaw cycles.)

### Background

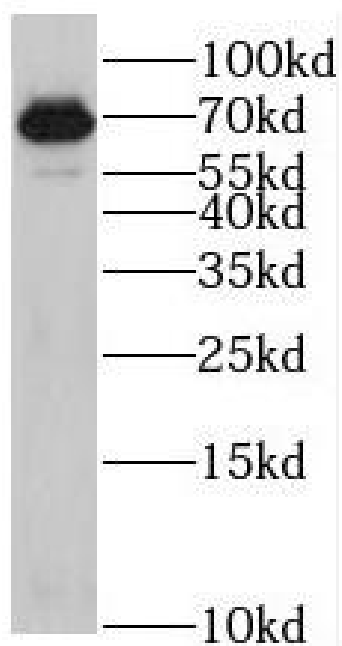
Substrate-specific adapter of a BCR(BTB-CUL3-RBX1) E3 ubiquitin-protein ligase complex required for mitotic progression and cytokinesis. The BCR(KLHL9-KLHL13) E3 ubiquitin ligase complex mediates the ubiquitination of AURKB and controls the dynamic behavior of AURKB on mitotic chromosomes and thereby coordinates faithful mitotic progression and completion of cytokinesis.

### Immunogen information

Immunogen:	kelch-like 13(Drosophila)
Synonyms:	Kelch-like protein 13 BTB and kelch domain-containing protein 2 KLHL13 BKLHD2 KIAA1309
Observed MW:	68 kDa
Uniprot ID :	Q9P2N7

### Application

Reactivity:	Human, Mouse, Rat
Tested Application:	ELISA, WB
Recommended dilution: WB:	1:500-1:2000
Image:	



Jurkat cells were subjected to SDS PAGE followed by western blot with FNab04611(KLHL13 antibody) at dilution of 1:500