

KLHL12 antibody

Product Information

Catalog No.:	FNab04610
Size:	100µg
Form:	liquid
Purification:	Immunogen affinity purified
Purity:	≥95% as determined by SDS-PAGE
Host:	Rabbit
Clonality:	polyclonal
Clone ID:	None
IsoType:	IgG
Storage:	PBS with 0.02% sodium azide and 50% glycerol pH 7.3, -20°C for 12 months(Avoid repeated freeze / thaw cycles.)

Background

Substrate-specific adapter of a BCR(BTB-CUL3-RBX1) E3 ubiquitin ligase complex that acts as a negative regulator of Wnt signaling pathway and ER-Golgi transport. The BCR(KLHL12) complex is involved in ER-Golgi transport by regulating the size of COPII coats, thereby playing a key role in collagen export, which is required for embryonic stem(ES) cells division: BCR(KLHL12) acts by mediating monoubiquitination of SEC31(SEC31A or SEC31B). As part of the BCR(KLHL12) complex, also acts as a negative regulator of the Wnt signaling pathway by mediating ubiquitination and subsequent proteolysis of DVL3. The BCR(KLHL12) complex also mediates polyubiquitination of DRD4, without leading to degradation of DRD4.

Immunogen information

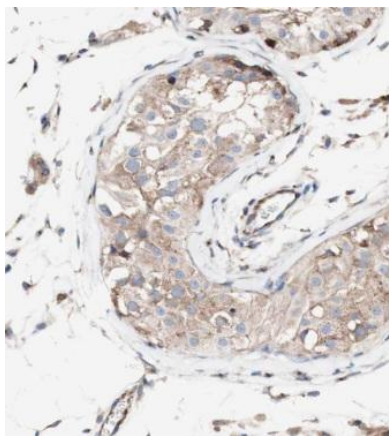
Immunogen:	kelch-like 12(Drosophila)
Synonyms:	Kelch-like protein 12 CUL3-interacting protein 1 DKIR homolog (hDKIR) KLHL12 C3IP1
Observed MW:	53-56 kDa, 63-67 kDa
Uniprot ID :	Q53G59

Application

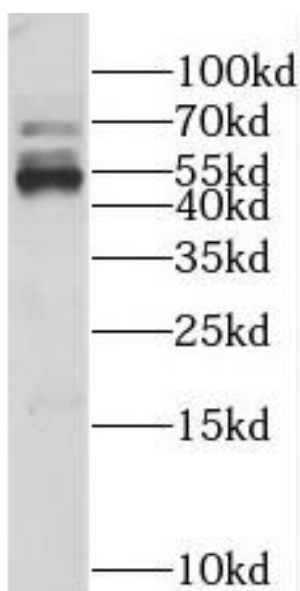
Reactivity:	Human, Mouse, Rat
Tested Application:	ELISA, WB, IHC, IF

Recommended dilution: WB: 1:500-1:2000; IHC: 1:20-1:200; IF: 1:20-1:200

Image:



Immunohistochemistry of paraffin-embedded human testis using FNab04610(KLHL12 antibody) at dilution of 1:100



PC-3 cells were subjected to SDS PAGE followed by western blot with FNab04610(KLHL12 antibody) at dilution of 1:1000