

## KISS1R-Specific antibody

### Product Information

|               |  |
|---------------|--|
| Catalog No.:  | FNab04593  |
| Size:         | 100µg  |
| Form:         | liquid   |
| Purification: | Immunogen affinity purified  |
| Purity:       | ≥95% as determined by SDS-PAGE   |
| Host:         | Rabbit   |
| Clonality:    | polyclonal   |
| Clone ID:     | None   |
| IsoType:      | IgG  |
| Storage:      | PBS with 0.02% sodium azide and 50% glycerol pH 7.3, -20°C for 12 months(Avoid repeated freeze / thaw cycles.) |

### Background

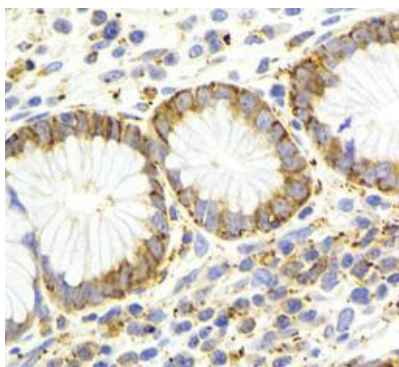
None

### Immunogen information

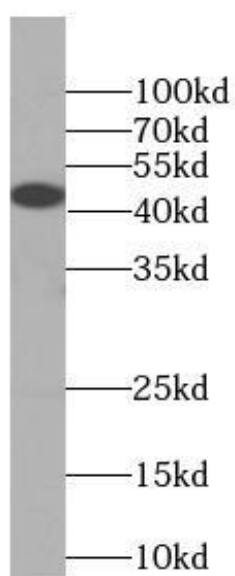
|              |   |
|--------------|---|
| Immunogen:   | KISS1 receptor  |
| Synonyms:    | KiSS-1 receptor (KiSS-1R) G-protein coupled receptor 54 G-protein coupled receptor OT7T175 (hOT7T175) Hypogonadotropin-1 Kisspeptins receptor Metastin receptor KISS1R AXOR12 GPR54 |
| Observed MW: | 45 kDa  |
| Uniprot ID : | Q969F8  |

### Application

|                       |   |
|-----------------------|---|
| Reactivity:           | Human, Mouse, Rat                                       |
| Tested Application:   | ELISA, WB, IHC, IF                                      |
| Recommended dilution: | WB: 1:500 - 1:2000; IHC: 1:50 - 1:200; IF: 1:50 - 1:200 |
| Image:                |   |



Immunohistochemistry of paraffin-embedded human gastric cancer tissue slide using FNab04593(KISS1R Antibody) at dilution of 1:100



SH-SY5Y cells were subjected to SDS PAGE followed by western blot with FNab04593(KISS1R-Specific antibody) at dilution of 1:600