

## KIRREL2 antibody

### Product Information

Catalog No.:	FNab04590
Size:	100µg
Form:	liquid
Purification:	Immunogen affinity purified
Purity:	≥95% as determined by SDS-PAGE
Host:	Rabbit
Clonality:	polyclonal
Clone ID:	None
IsoType:	IgG
Storage:	PBS with 0.02% sodium azide and 50% glycerol pH 7.3, -20°C for 12 months(Avoid repeated freeze / thaw cycles.)

### Background

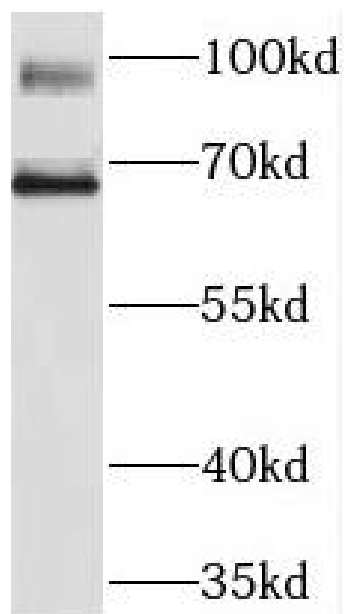
None

### Immunogen information

Immunogen:	kin of IRRE like 2(Drosophila)
Synonyms:	Kin of IRRE-like protein 2 Kin of irregular chiasm-like protein 2 Nephrin-like protein 3 KIRREL2 NEPH3
Observed MW:	67 kDa, 90 kDa
Uniprot ID :	Q6UWL6

### Application

Reactivity:	Human, Mouse, Rat
Tested Application:	ELISA, WB
Recommended dilution:	WB: 1:500-1:2000
Image:	



mouse liver tissue were subjected to SDS PAGE followed by western blot with FNab04590(KIRREL2 antibody) at dilution of 1:300