

KIFC3 antibody

Product Information

Catalog No.:	FNab04574
Size:	100µg
Form:	liquid
Purification:	Immunogen affinity purified
Purity:	≥95% as determined by SDS-PAGE
Host:	Rabbit
Clonality:	polyclonal
Clone ID:	None
IsoType:	IgG
Storage:	PBS with 0.02% sodium azide and 50% glycerol pH 7.3, -20°C for 12 months(Avoid repeated freeze / thaw cycles.)

Background

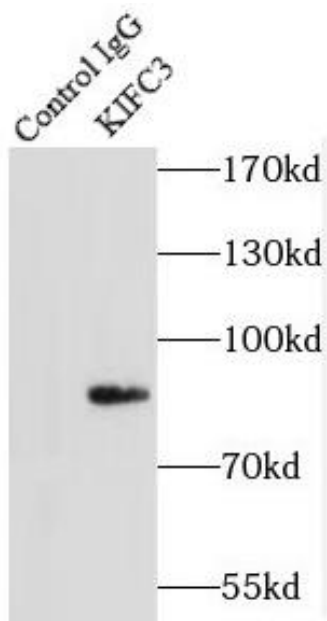
Minus-end microtubule-dependent motor protein. Involved in apically targeted transport(By similarity). Required for zonula adherens maintenance.

Immunogen information

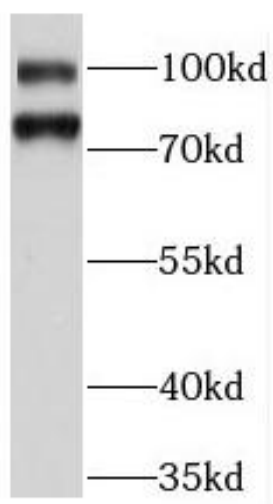
Immunogen:	kinesin family member C3
Synonyms:	Kinesin-like protein KIFC3 KIFC3
Observed MW:	80-85 kDa, 95-100 kDa
Uniprot ID :	Q9BVG8

Application

Reactivity:	Human, Mouse, Rat
Tested Application:	ELISA, WB, IP
Recommended dilution:	WB: 1:500-1:2000; IP: 1:200-1:2000
Image:	



IP Result of anti-KIFC3 (IP:FNab04574, 4ug;
Detection:FNab04574 1:500) with mouse kidney
tissue lysate 7200ug.



mouse lung tissue were subjected to SDS PAGE
followed by western blot with FNab04574(KIFC3
antibody) at dilution of 1:500