

KIF6 antibody

Product Information

Catalog No.:	FNab04569
Size:	100µg
Form:	liquid
Purification:	Immunogen affinity purified
Purity:	≥95% as determined by SDS-PAGE
Host:	Rabbit
Clonality:	polyclonal
Clone ID:	None
IsoType:	IgG
Storage:	PBS with 0.02% sodium azide and 50% glycerol pH 7.3, -20°C for 12 months(Avoid repeated freeze / thaw cycles.)

Background

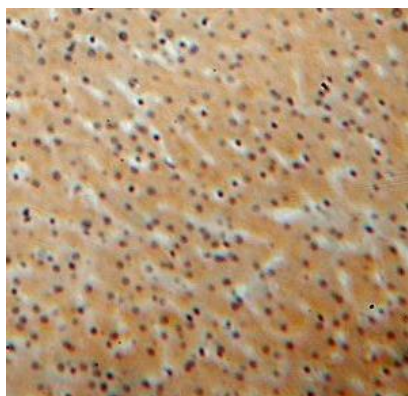
None

Immunogen information

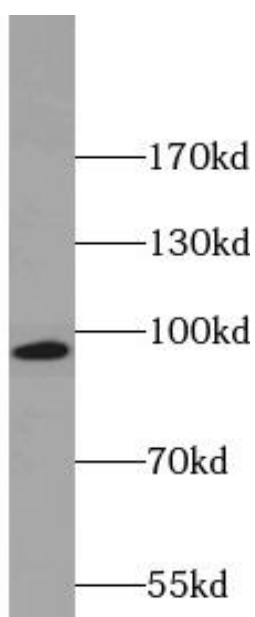
Immunogen:	kinesin family member 6
Synonyms:	Kinesin-like protein KIF6 KIF6 C6orf102
Observed MW:	93 kDa
Uniprot ID :	Q6ZMV9

Application

Reactivity:	Human, Mouse, Rat
Tested Application:	ELISA, WB, IHC
Recommended dilution:	WB: 1:200-1:2000; IP: 1:200-1:2000; IHC: 1:20-1:200
Image:	



Immunohistochemistry of paraffin-embedded human liver using FNab04569(KIF6 antibody) at dilution of 1:50



mouse testis tissue were subjected to SDS PAGE followed by western blot with FNab04569(KIF6 antibody) at dilution of 1:800