

KIF5A antibody

Product Information

Catalog No.:	FNab04566
Size:	100µg
Form:	liquid
Purification:	Immunogen affinity purified
Purity:	≥95% as determined by SDS-PAGE
Host:	Rabbit
Clonality:	polyclonal
Clone ID:	None
IsoType:	IgG
Storage:	PBS with 0.02% sodium azide and 50% glycerol pH 7.3, -20°C for 12 months(Avoid repeated freeze / thaw cycles.)

Background

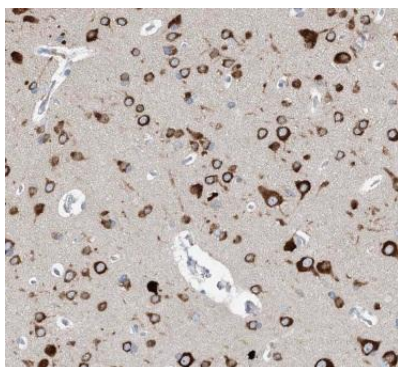
Microtubule-dependent motor required for slow axonal transport of neurofilament proteins(NFH, NFM and NFL).

Immunogen information

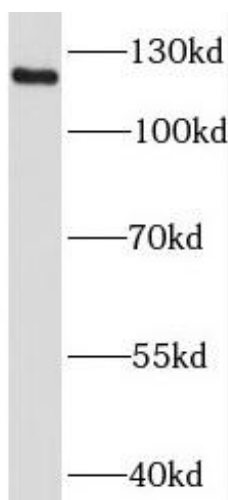
Immunogen:	kinesin family member 5A
Synonyms:	Kinesin heavy chain isoform 5A Kinesin heavy chain neuron-specific 1 Neuronal kinesin heavy chain (NKHC) KIF5A NKHC1
Observed MW:	118-120 kDa
Uniprot ID :	Q12840

Application

Reactivity:	Human, Mouse, Rat
Tested Application:	ELISA, WB, IHC
Recommended dilution:	WB: 1:500-1:2000; IHC: 1:20-1:200
Image:	



Immunohistochemistry of paraffin-embedded human brain using FNab04566(KIF5A antibody) at dilution of 1:100



mouse brain tissue were subjected to SDS PAGE followed by western blot with FNab04566(KIF5A antibody) at dilution of 1:2000