

KIF2B antibody

Product Information

Catalog No.:	FNab04561
Size:	100µg
Form:	liquid
Purification:	Immunogen affinity purified
Purity:	≥95% as determined by SDS-PAGE
Host:	Rabbit
Clonality:	polyclonal
Clone ID:	None
IsoType:	IgG
Storage:	PBS with 0.02% sodium azide and 50% glycerol pH 7.3, -20°C for 12 months(Avoid repeated freeze / thaw cycles.)

Background

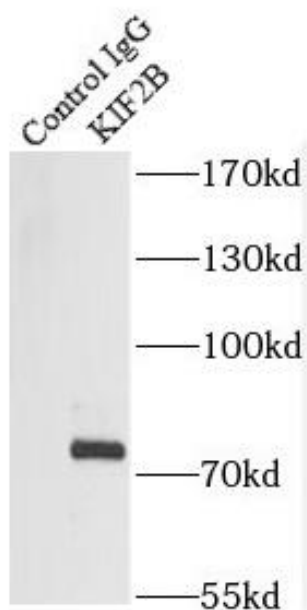
Plus end-directed microtubule-dependent motor required for spindle assembly and chromosome movement. Has microtubule depolymerization activity.

Immunogen information

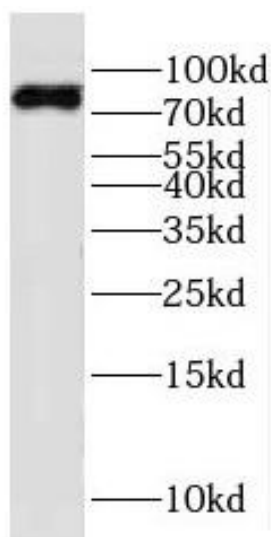
Immunogen:	kinesin family member 2B
Synonyms:	Kinesin-like protein KIF2B KIF2B
Observed MW:	80 kDa
Uniprot ID :	Q8N4N8

Application

Reactivity:	Human, Mouse, Rat
Tested Application:	ELISA, WB, IP
Recommended dilution:	WB: 1:500-1:2000; IP: 1:200-1:2000
Image:	



IP Result of anti-KIF2B (IP:FNab04561, 4ug;
Detection:FNab04561 1:1000) with mouse testis
tissue lysate 4000ug.



mouse brain tissue were subjected to SDS PAGE
followed by western blot with FNab04561(KIF2B
antibody) at dilution of 1:1000