

KIF22 antibody

Product Information

| | |
|---------------|----------------------------------------------------------------------------------------------------------------|
| Catalog No.: | FNab04558 |
| Size: | 100µg |
| Form: | liquid |
| Purification: | Immunogen affinity purified |
| Purity: | ≥95% as determined by SDS-PAGE |
| Host: | Rabbit |
| Clonality: | polyclonal |
| Clone ID: | None |
| IsoType: | IgG |
| Storage: | PBS with 0.02% sodium azide and 50% glycerol pH 7.3, -20°C for 12 months(Avoid repeated freeze / thaw cycles.) |

Background

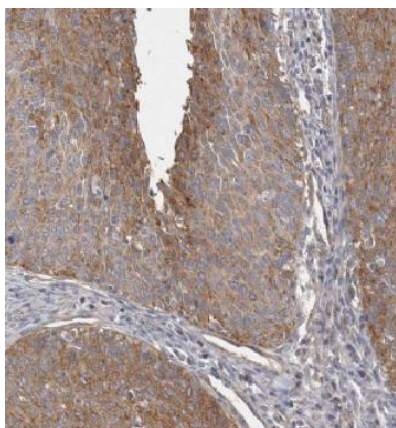
Kinesin family that is involved in spindle formation and the movements of chromosomes during mitosis and meiosis. Binds to microtubules and to DNA.

Immunogen information

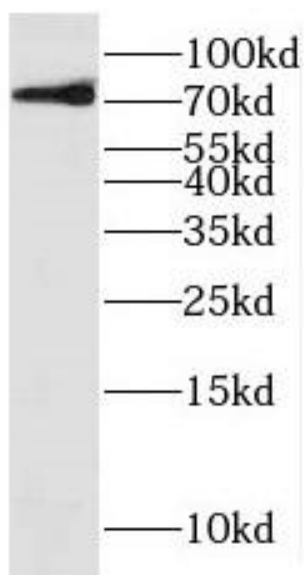
| | |
|--------------|----------------------------------------------------------------------------------------------------|
| Immunogen: | kinesin family member 22 |
| Synonyms: | Kinesin-like protein KIF22 Kinesin-like DNA-binding protein Kinesin-like protein 4 KIF22 KID KNSL4 |
| Observed MW: | 73 kDa |
| Uniprot ID : | Q14807 |

Application

| | |
|-----------------------|-----------------------------------|
| Reactivity: | Human, Mouse, Rat |
| Tested Application: | ELISA, WB, IHC |
| Recommended dilution: | WB: 1:500-1:2000; IHC: 1:20-1:200 |
| Image: | |



Immunohistochemistry of paraffin-embedded human cervical cancer using FNaB04558(KIF22 antibody) at dilution of 1:100



human heart tissue were subjected to SDS PAGE followed by western blot with FNaB04558(KIF22 antibody) at dilution of 1:400