

KIF1B antibody

Product Information

Catalog No.:	FNab04555
Size:	100µg
Form:	liquid
Purification:	Immunogen affinity purified
Purity:	≥95% as determined by SDS-PAGE
Host:	Rabbit
Clonality:	polyclonal
Clone ID:	None
IsoType:	IgG
Storage:	PBS with 0.02% sodium azide and 50% glycerol pH 7.3, -20°C for 12 months (Avoid repeated freeze / thaw cycles.)

Background

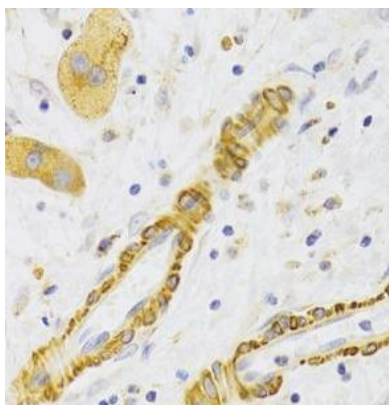
This gene encodes a motor protein that transports mitochondria and synaptic vesicle precursors. Mutations in this gene cause Charcot-Marie-Tooth disease, type 2A1.

Immunogen information

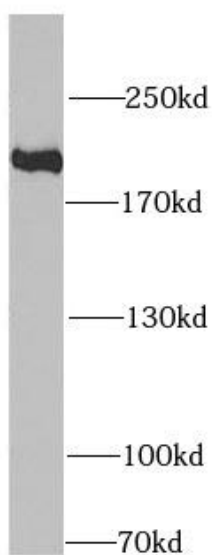
Immunogen:	kinesin family member 1B
Synonyms:	Kinesin-like protein KIF1B (Klp) KIF1B KIAA0591 KIAA1448
Observed MW:	200 kDa
Uniprot ID :	O60333

Application

Reactivity:	Human, Mouse, Rat
Tested Application:	ELISA, WB, IHC
Recommended dilution:	WB: 1:500 - 1:2000; IHC: 1:50 - 1:200
Image:	



Immunohistochemistry of paraffin-embedded human liver cancer using FNab04555(KIF1B antibody) at dilution of 1:100



HeLa cells were subjected to SDS PAGE followed by western blot with FNab04555(KIF1B antibody) at dilution of 1:1000