

KIF15 antibody

Product Information

Catalog No.:	FNab04551
Size:	100µg
Form:	liquid
Purification:	Immunogen affinity purified
Purity:	≥95% as determined by SDS-PAGE
Host:	Rabbit
Clonality:	polyclonal
Clone ID:	None
IsoType:	IgG
Storage:	PBS with 0.02% sodium azide and 50% glycerol pH 7.3, -20°C for 12 months(Avoid repeated freeze / thaw cycles.)

Background

KIF15, also named as KLP2 and KNSL7, belongs to the kinesin-like protein family and KLP2 subfamily. It is a plus-end directed kinesin-like motor enzyme which involved in mitotic spindle assembly. Several isoforms of KIF15 exist due to the alternative splicing, with molecular weight between 130-160 kDa. Sometimes higher molecular weight around 200 kDa can also be observed, which may be a modified variant of KIF15.

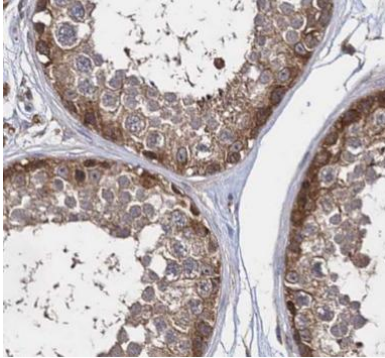
Immunogen information

Immunogen:	kinesin family member 15
Synonyms:	Kinesin-like protein KIF15 Kinesin-like protein 2 (hKLP2) Kinesin-like protein 7 Serologically defined breast cancer antigen NY-BR-62 KIF15 KLP2 KNSL7
Observed MW:	160 kDa
Uniprot ID :	Q9NS87

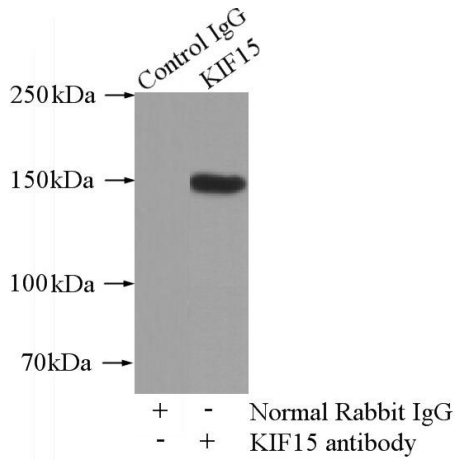
Application

Reactivity:	Human, Mouse, Rat
Tested Application:	ELISA, WB, IHC, IF, IP
Recommended dilution:	WB: 1:500-1:2000; IP: 1:500-1:1000; IHC: 1:20-1:200; IF: 1:20-1:200

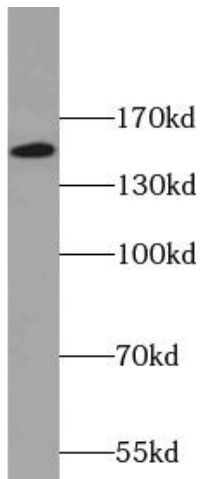
Image:



Immunohistochemistry of paraffin-embedded human testis using FNab04551(KIF15 antibody) at dilution of 1:50



IP Result of anti-KIF15 (IP: FNab04551, 4ug; Detection: FNab04551 1:500) with mouse thymus tissue lysate 3000ug.



mouse thymus tissue were subjected to SDS PAGE followed by western blot with FNab04551(KIF15 antibody) at dilution of 1:500