

KIF12 antibody

Product Information

Catalog No.:	FNab04550
Size:	100µg
Form:	liquid
Purification:	Immunogen affinity purified
Purity:	≥95% as determined by SDS-PAGE
Host:	Rabbit
Clonality:	polyclonal
Clone ID:	None
IsoType:	IgG
Storage:	PBS with 0.02% sodium azide and 50% glycerol pH 7.3, -20°C for 12 months(Avoid repeated freeze / thaw cycles.)

Background

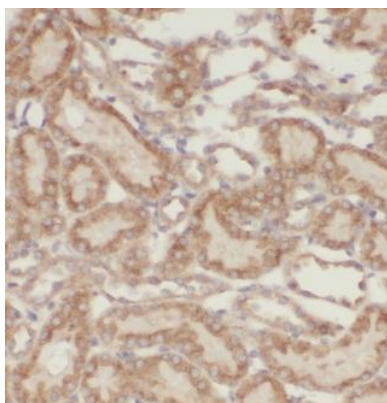
None

Immunogen information

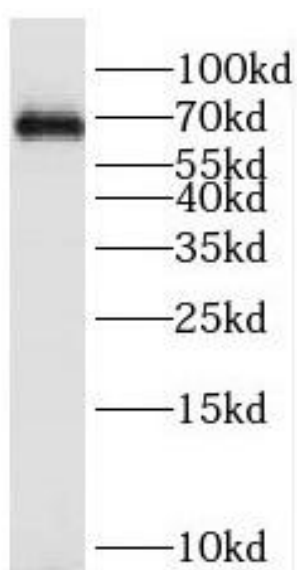
Immunogen:	kinesin family member 12
Synonyms:	Kinesin-like protein KIF12 KIF12
Observed MW:	65 kDa
Uniprot ID :	Q96FN5

Application

Reactivity:	Human, Mouse, Rat
Tested Application:	ELISA, WB, IHC
Recommended dilution:	WB: 1:500-1:2000; IHC: 1:20-1:200
Image:	



Immunohistochemistry of paraffin-embedded human kidney tissue slide using FNab04550(KIF12 Antibody) at dilution of 1:50



Y79 cells were subjected to SDS PAGE followed by western blot with FNab04550(KIF12 antibody) at dilution of 1:400