

## KHDRBS3 antibody

### Product Information

Catalog No.:	FNab04523
Size:	100µg
Form:	liquid
Purification:	Immunogen affinity purified
Purity:	≥95% as determined by SDS-PAGE
Host:	Rabbit
Clonality:	polyclonal
Clone ID:	None
IsoType:	IgG
Storage:	PBS with 0.02% sodium azide and 50% glycerol pH 7.3, -20°C for 12 months(Avoid repeated freeze / thaw cycles.)

### Background

RNA-binding protein that plays a role in the regulation of alternative splicing and influences mRNA splice site selection and exon inclusion. Binds preferentially to the 5'-[AU]UAAA-3' motif in vitro. Binds optimally to RNA containing 5'-[AU]UAA-3' as a bipartite motif spaced by more than 15 nucleotides. Binds poly(A). RNA-binding abilities are down-regulated by tyrosine kinase PTK6(PubMed:10564820, PubMed:19561594, PubMed:26758068). Involved in splice site selection of vascular endothelial growth factor(PubMed:15901763). In vitro regulates CD44 alternative splicing by direct binding to purine-rich exonic enhancer(By similarity). Can regulate alternative splicing of neurexins NRXN1-3 in the laminin G-like domain 6 containing the evolutionary conserved neurexin alternative spliced segment 4(AS4) involved in neurexin selective targeting to postsynaptic partners such as neuroligins and LRRTM family members(PubMed:26758068). Targeted, cell-type specific splicing regulation of NRXN1 at AS4 is involved in neuronal glutamatergic synapse function and plasticity(By similarity). May regulate expression of KHDRBS2/SLIM-1 in defined brain neuron populations by modifying its alternative splicing(By similarity). Can bind FABP9 mRNA(By similarity). May play a role as a negative regulator of cell growth. Inhibits cell proliferation. (Microbial infection) Involved in post-transcriptional regulation of HIV-1 gene expression.

### Immunogen information

Immunogen:	KH domain containing, RNA binding, signal transduction associated 3
Synonyms:	KH domain-containing, RNA-binding, signal transduction-associated protein 3 RNA-binding protein T-Star Sam68-like mammalian protein 2 (SLM-2) Sam68-like phosphotyrosine protein KHDRBS3 SALP SLM2

Observed MW: 55 kDa  
Uniprot ID : O75525

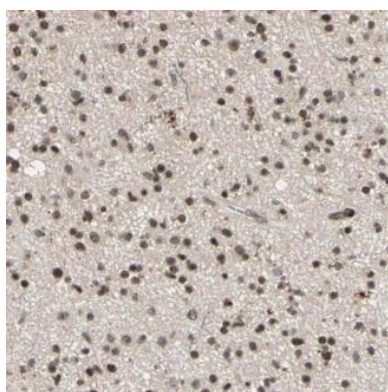
### Application

Reactivity: Human, Mouse, Rat

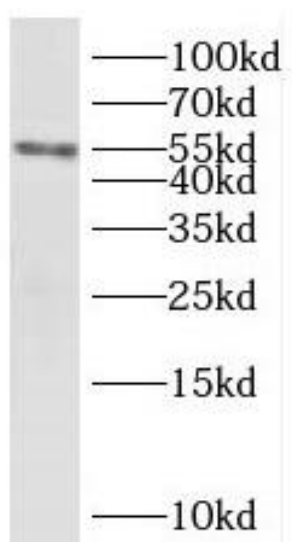
Tested Application: ELISA, WB, IHC

Recommended dilution: WB: 1:500-1:2000; IHC: 1:20-1:200

Image:



Immunohistochemistry of paraffin-embedded human gliomas using FNab04523(KHDRBS3 antibody) at dilution of 1:100



HepG2 cells were subjected to SDS PAGE followed by western blot with FNab04523(KHDRBS3 antibody) at dilution of 1:300