

KHDC3L antibody

Product Information

Catalog No.:	FNab04522
Size:	100µg
Form:	liquid
Purification:	Immunogen affinity purified
Purity:	≥95% as determined by SDS-PAGE
Host:	Rabbit
Clonality:	polyclonal
Clone ID:	None
IsoType:	IgG
Storage:	PBS with 0.02% sodium azide and 50% glycerol pH 7.3, -20°C for 12 months(Avoid repeated freeze / thaw cycles.)

Background

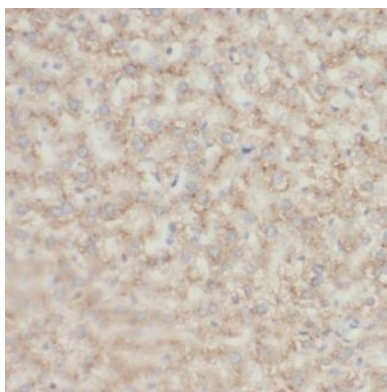
None

Immunogen information

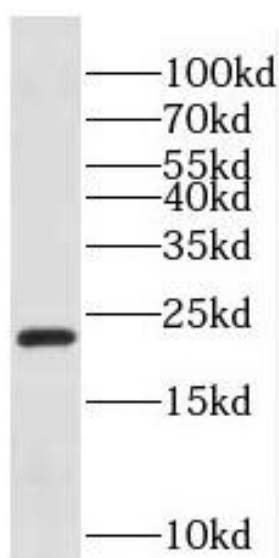
Immunogen:	chromosome 6 open reading frame 221
Synonyms:	KH domain-containing protein 3 ES cell-associated transcript 1 protein KHDC3-like protein KHDC3L C6orf221 ECAT1
Observed MW:	21-24 kDa
Uniprot ID :	Q587J8

Application

Reactivity:	Human
Tested Application:	ELISA, WB, IHC, IF
Recommended dilution:	WB: 1:500-1:2000; IHC: 1:20-1:200; IF: 1:20-1:200
Image:	



Immunohistochemistry of paraffin-embedded human liver cancer tissue slide using FNab04522(C6orf221 Antibody) at dilution of 1:50



human testis tissue were subjected to SDS PAGE followed by western blot with FNab04522(C6orf221 Antibody) at dilution of 1:600