

KDM3A antibody

Product Information

Catalog No.:	FNab04510
Size:	100µg
Form:	liquid
Purification:	Immunogen affinity purified
Purity:	≥95% as determined by SDS-PAGE
Host:	Rabbit
Clonality:	polyclonal
Clone ID:	None
IsoType:	IgG
Storage:	PBS with 0.02% sodium azide and 50% glycerol pH 7.3, -20°C for 12 months(Avoid repeated freeze / thaw cycles.)

Background

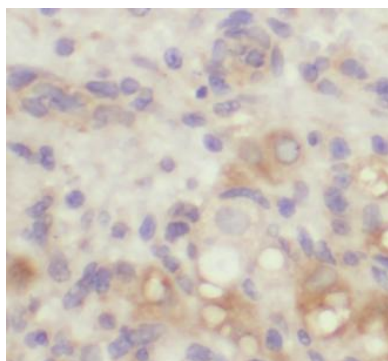
None

Immunogen information

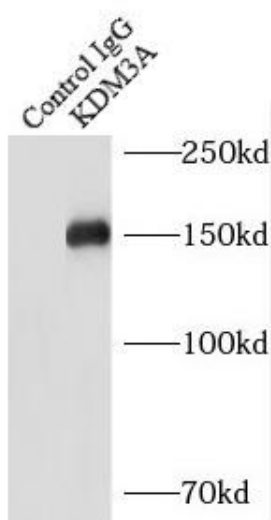
Immunogen:	lysine(K)-specific demethylase 3A
Synonyms:	Lysine-specific demethylase 3A JmJc domain-containing histone demethylation protein 2A Jumonji domain-containing protein 1A [histone H3]-dimethyl-L-lysine(9) demethylase 3A KDM3A JHDM2A JMJD1 JMJD1A KIAA0742 TSGA
Observed MW:	150 kDa
Uniprot ID :	Q9Y4C1

Application

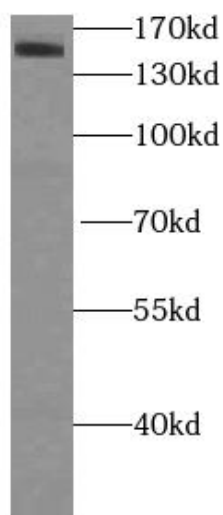
Reactivity:	Human, Mouse
Tested Application:	ELISA, IF, IP, WB, IHC
Recommended dilution:	WB: 1:1000-1:4000; IP: 1:500-1:2000 ; IHC: 1:20-1:200; IF: 1:50-1:500
Image:	



Immunohistochemistry of paraffin-embedded human ovary tumor using FNab04510(KDM3A,JMJD1A antibody) at dilution of 1:100



IP Result of anti-KDM3A,JMJD1A (IP:FNab04510, 5ug; Detection:FNab04510 1:1000) with HeLa cells lysate 2500ug.



HeLa cells were subjected to SDS PAGE followed by western blot with FNab04510(KDM3A,JMJD1A antibody) at dilution of 1:2000