

## KDM2A antibody

### Product Information

Catalog No.:	FNab04509
Size:	100µg
Form:	liquid
Purification:	Immunogen affinity purified
Purity:	≥95% as determined by SDS-PAGE
Host:	Rabbit
Clonality:	polyclonal
Clone ID:	None
IsoType:	IgG
Storage:	PBS with 0.02% sodium azide and 50% glycerol pH 7.3, -20°C for 12 months(Avoid repeated freeze / thaw cycles.)

### Background

Histone demethylase that specifically demethylates 'Lys-36' of histone H3, thereby playing a central role in histone code. Preferentially demethylates dimethylated H3 'Lys-36' residue while it has weak or no activity for mono-and tri-methylated H3 'Lys-36'. May also recognize and bind to some phosphorylated proteins and promote their ubiquitination and degradation. Required to maintain the heterochromatic state. Associates with centromeres and represses transcription of small non-coding RNAs that are encoded by the clusters of satellite repeats at the centromere. Required to sustain centromeric integrity and genomic stability, particularly during mitosis.

### Immunogen information

Immunogen:	lysine(K)-specific demethylase 2A
Synonyms:	Lysine-specific demethylase 2A CXXC-type zinc finger protein 8 F-box and leucine-rich repeat protein 11 F-box protein FBL7 F-box protein Lilina F-box/LRR-repeat protein 11 JmjC domain-containing histone demethylation protein 1A [Histone-H3]-lysine-36 demethylase 1A KDM2A CXXC8 FBL11 FBL7 FBXL11 JHDM1A KIAA1004
Observed MW:	80-132 kDa
Uniprot ID :	Q9Y2K7

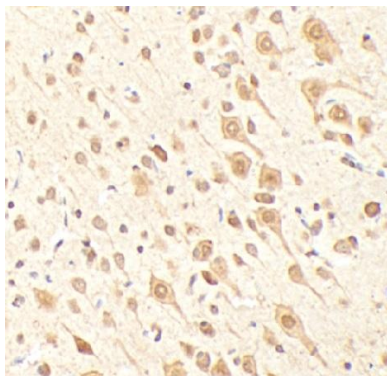
### Application

Reactivity:	Human, Mouse, Rat
-------------	-------------------

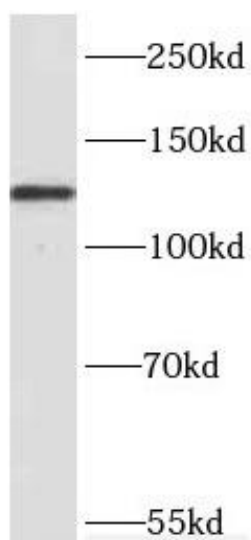
Tested Application: ELISA, WB, IHC

Recommended dilution: WB: 1:500 - 1:2000; IHC: 1:50 - 1:200

Image:



Immunohistochemistry of paraffin-embedded rat brain tissue slide using FNab04509(KDM2A Antibody) at dilution of 1:100



Jurkat cells were subjected to SDS PAGE followed by western blot with FNab04509( KDM2A Antibody) at dilution of 1:1000