

KCNE1 antibody

Product Information

Catalog No.:	FNab04482
Size:	100µg
Form:	liquid
Purification:	Immunogen affinity purified
Purity:	≥95% as determined by SDS-PAGE
Host:	Rabbit
Clonality:	polyclonal
Clone ID:	None
IsoType:	IgG
Storage:	PBS with 0.02% sodium azide and 50% glycerol pH 7.3, -20°C for 12 months(Avoid repeated freeze / thaw cycles.)

Background

Ancillary protein that assembles as a beta subunit with a voltage-gated potassium channel complex of pore-forming alpha subunits. Modulates the gating kinetics and enhances stability of the channel complex. Assembled with KCNB1 modulates the gating characteristics of the delayed rectifier voltage-dependent potassium channel KCNB1(PubMed:19219384). Assembled with KCNQ1/KVLQT1 is proposed to form the slowly activating delayed rectifier cardiac potassium(IKs) channel. The outward current reaches its steady state only after 50 seconds. Assembled with KCNH2/HERG may modulate the rapidly activating component of the delayed rectifying potassium current in heart(IKr).

Immunogen information

Immunogen:	potassium voltage-gated channel, Isk-related family, member 1
Synonyms:	Potassium voltage-gated channel subfamily E member 1 Delayed rectifier potassium channel subunit Isk IKs producing slow voltage-gated potassium channel subunit beta Mink Minimal potassium channel KCNE1
Observed MW:	18-25 kDa, 28-35 kDa
Uniprot ID :	P15382

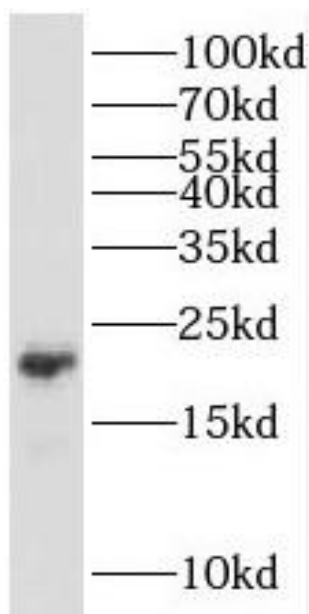
Application

Reactivity:	Human, Mouse, Rat
-------------	-------------------

Tested Application: ELISA, WB, IF

Recommended dilution: WB: 1:500-1:2000; IF: 1:20-1:200

Image:



mouse heart tissue were subjected to SDS PAGE followed by western blot with FNab04482(KCNE1 antibody) at dilution of 1:500