

KAT5 antibody

Product Information

Catalog No.:	FNab04468
Size:	100µg
Form:	liquid
Purification:	Immunogen affinity purified
Purity:	≥95% as determined by SDS-PAGE
Host:	Rabbit
Clonality:	polyclonal
Clone ID:	None
IsoType:	IgG
Storage:	PBS with 0.02% sodium azide and 50% glycerol pH 7.3, -20°C for 12 months(Avoid repeated freeze / thaw cycles.)

Background

Catalytic subunit of the NuA4 histone acetyltransferase complex which is involved in transcriptional activation of select genes principally by acetylation of nucleosomal histones H4 and H2A. This modification may both alter nucleosome-DNA interactions and promote interaction of the modified histones with other proteins which positively regulate transcription. This complex may be required for the activation of transcriptional programs associated with oncogene and proto-oncogene mediated growth induction, tumor suppressor mediated growth arrest and replicative senescence, apoptosis, and DNA repair. NuA4 may also play a direct role in DNA repair when recruited to sites of DNA damage. Directly acetylates and activates ATM. Component of a SWR1-like complex that specifically mediates the removal of histone H2A.Z/H2AFZ from the nucleosome. In case of HIV-1 infection, interaction with the viral Tat protein leads to KAT5 polyubiquitination and targets it to degradation. Relieves NR1D2-mediated inhibition of APOC3 expression by acetylating NR1D2. Promotes FOXP3 acetylation and positively regulates its transcriptional repressor activity(PubMed:17360565).

Immunogen information

Immunogen:	K(lysine) acetyltransferase 5
Synonyms:	Histone acetyltransferase KAT5 60 kDa Tat-interactive protein (Tip60) Histone acetyltransferase HTATIP (HIV-1 Tat interactive protein) Lysine acetyltransferase 5 Protein 2-hydroxyisobutyryltransferase KAT5 Protein acetyltransferase KAT5 Protein crotonyltransferase KAT5 cPLA(2)-interacting protein KAT5 HTATIP TIP60

Observed MW: 55-60 kDa

Uniprot ID : Q92993

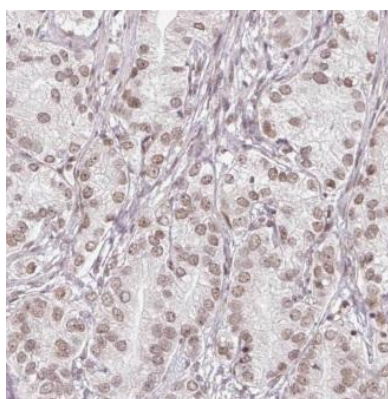
Application

Reactivity: Human, Mouse, Rat

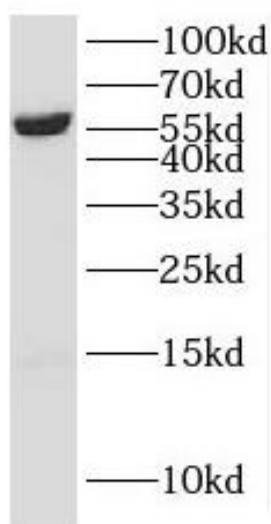
Tested Application: ELISA, WB, IHC

Recommended dilution: WB: 1:500-1:2000; IHC: 1:20-1:200

Image:



Immunohistochemistry of paraffin-embedded human prostate cancer using FNab04468(KAT5 antibody) at dilution of 1:100



PC-3 cells were subjected to SDS PAGE followed by western blot with FNab04468(KAT5 antibody) at dilution of 1:1000