

SERPINA4 antibody

Product Information

| | |
|---------------|--|
| Catalog No.: | FNab04461 |
| Size: | 100µg |
| Form: | liquid |
| Purification: | Immunogen affinity purified |
| Purity: | ≥95% as determined by SDS-PAGE |
| Host: | Rabbit |
| Clonality: | polyclonal |
| Clone ID: | None |
| IsoType: | IgG |
| Storage: | PBS with 0.02% sodium azide and 50% glycerol pH 7.3, -20°C for 12 months(Avoid repeated freeze / thaw cycles.) |

Background

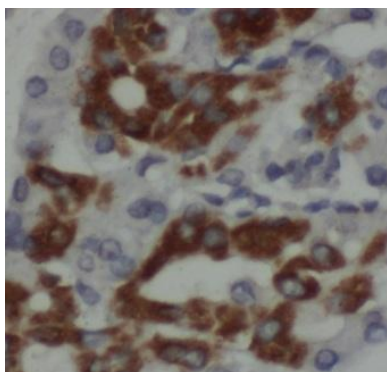
None

Immunogen information

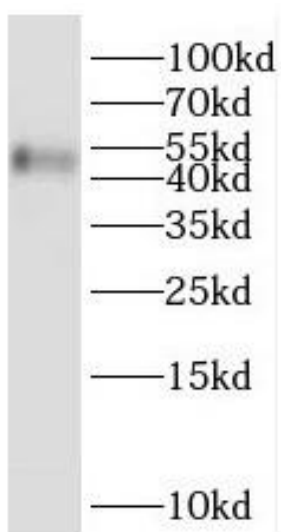
| | |
|--------------|--|
| Immunogen: | serpin peptidase inhibitor, clade A(alpha-1 antiproteinase, antitrypsin), member 4 |
| Synonyms: | Kallistatin Kallikrein inhibitor Peptidase inhibitor 4 (PI-4) Serpin A4 SERPINA4 KST PI4 |
| Observed MW: | 49 kDa |
| Uniprot ID : | P29622 |

Application

| | |
|-----------------------|-----------------------------------|
| Reactivity: | Human |
| Tested Application: | ELISA, WB, IHC |
| Recommended dilution: | WB: 1:500-1:2000; IHC: 1:20-1:200 |
| Image: | |



Immunohistochemistry of paraffin-embedded human pancreas cancer using FNab04461(SERPINA4 antibody) at dilution of 1:50



human spleen tissue were subjected to SDS PAGE followed by western blot with FNab04461(SERPINA4 antibody) at dilution of 1:400