

## KLK11 antibody

### Product Information

|               |  |
|---------------|--|
| Catalog No.:  | FNab04457  |
| Size:         | 100µg  |
| Form:         | liquid   |
| Purification: | Immunogen affinity purified  |
| Purity:       | ≥95% as determined by SDS-PAGE   |
| Host:         | Rabbit   |
| Clonality:    | polyclonal   |
| Clone ID:     | None   |
| IsoType:      | IgG  |
| Storage:      | PBS with 0.02% sodium azide and 50% glycerol pH 7.3, -20°C for 12 months(Avoid repeated freeze / thaw cycles.) |

### Background

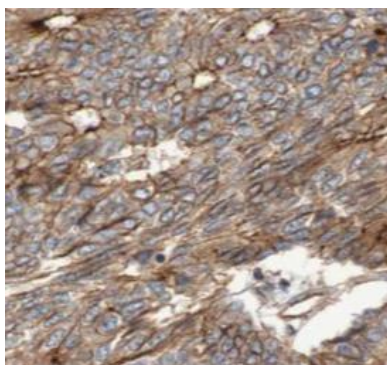
None

### Immunogen information

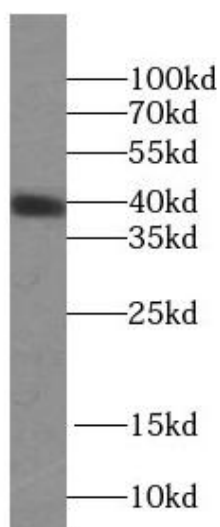
|              |   |
|--------------|---|
| Immunogen:   | kallikrein-related peptidase 11   |
| Synonyms:    | Kallikrein-11 (hK11) Hippostasin Serine protease 20 Trypsin-like protease Kallikrein-11 inactive chain 1 Kallikrein-11 inactive chain 2 KLK11 PRSS20 TLSP |
| Observed MW: | 40 kDa  |
| Uniprot ID : | Q9UBX7  |

### Application

|                       |   |
|-----------------------|---|
| Reactivity:           | Human, Mouse, Rat                                 |
| Tested Application:   | ELISA, WB, IHC, IF                                |
| Recommended dilution: | WB: 1:500-1:2000; IHC: 1:20-1:200; IF: 1:10-1:100 |
| Image:                |   |



Immunohistochemistry of paraffin-embedded human prostate cancer using FNa04457(KLK11 antibody) at dilution of 1:200



MCF7 cells were subjected to SDS PAGE followed by western blot with FNa04457(KLK11 antibody) at dilution of 1:1000