

ITLN1 antibody

Product Information

Catalog No.:	FNab04415
Size:	100µg
Form:	liquid
Purification:	Immunogen affinity purified
Purity:	≥95% as determined by SDS-PAGE
Host:	Rabbit
Clonality:	polyclonal
Clone ID:	None
IsoType:	IgG
Storage:	PBS with 0.02% sodium azide and 50% glycerol pH 7.3, -20°C for 12 months(Avoid repeated freeze / thaw cycles.)

Background

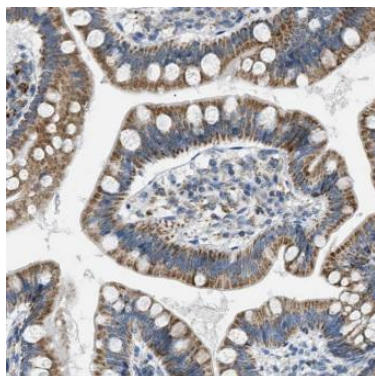
Has no effect on basal glucose uptake but enhances insulin-stimulated glucose uptake in adipocytes. Increases AKT phosphorylation in the absence and presence of insulin. May play a role in the defense system against microorganisms. May specifically recognize carbohydrate chains of pathogens and bacterial components containing galactofuranosyl residues, in a calcium-dependent manner. May be involved in iron metabolism.

Immunogen information

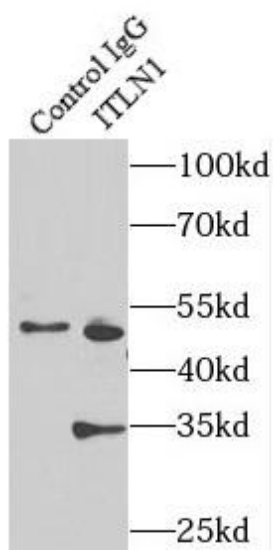
Immunogen:	intelectin 1(galactofuranose binding)
Synonyms:	Intelectin-1 (ITLN-1) Endothelial lectin HL-1 Galactofuranose-binding lectin Intestinal lactoferrin receptor Omentin ITLN1 INTL ITLN LFR
Observed MW:	35-40 kDa
Uniprot ID :	Q8WWA0

Application

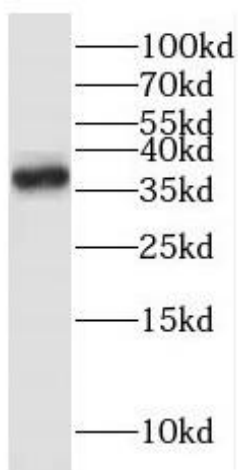
Reactivity:	Human, Mouse, Rat
Tested Application:	ELISA, WB, IHC, IP
Recommended dilution:	WB: 1:500-1:2000; IP: 1:200-1:1000; IHC: 1:20-1:200
Image:	



Immunohistochemistry of paraffin-embedded human small intestine using FNab04415(ITLN1 antibody) at dilution of 1:50



IP Result of anti-ITLN1 (IP:FNab04415, 4ug; Detection:FNab04415 1:500) with mouse appendix tissue lysate 4000ug.



mouse colon tissue were subjected to SDS PAGE followed by western blot with FNab04415(ITLN1 antibody) at dilution of 1:300