

INVS antibody

Product Information

Catalog No.:	FNab04369
Size:	100µg
Form:	liquid
Purification:	Immunogen affinity purified
Purity:	≥95% as determined by SDS-PAGE
Host:	Rabbit
Clonality:	polyclonal
Clone ID:	None
IsoType:	IgG
Storage:	PBS with 0.02% sodium azide and 50% glycerol pH 7.3, -20°C for 12 months(Avoid repeated freeze / thaw cycles.)

Background

Required for normal renal development and establishment of left-right axis. Probably acts as a molecular switch between different Wnt signaling pathways. Inhibits the canonical Wnt pathway by targeting cytoplasmic disheveled(DVL1) for degradation by the ubiquitin-proteasome. This suggests that it is required in renal development to oppose the repression of terminal differentiation of tubular epithelial cells by Wnt signaling. Involved in the organization of apical junctions in kidney cells together with NPHP1, NPHP4 and RPGRIP1L/NPHP8(By similarity). Does not seem to be strictly required for ciliogenesis(By similarity).

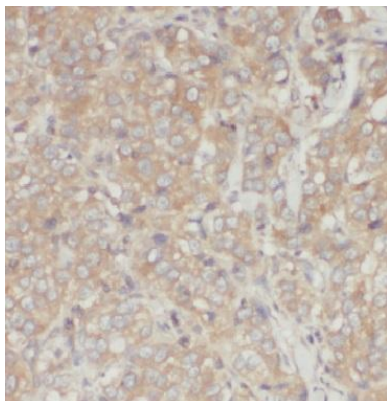
Immunogen information

Immunogen:	inversin
Synonyms:	Inversin Inversion of embryo turning homolog Nephrocystin-2 INVS INV NPHP2
Observed MW:	110-115 kDa
Uniprot ID :	Q9Y283

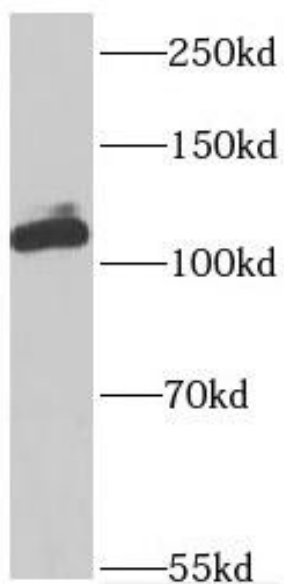
Application

Reactivity:	Human, Mouse, Rat
Tested Application:	ELISA, WB, IHC, IF
Recommended dilution:	WB: 1:500-1:2000; IHC: 1:20-1:200; IF: 1:20-1:200

Image:



Immunohistochemistry of paraffin-embedded human breast cancer using FNab04369(INVS antibody) at dilution of 1:100



MCF7 cells were subjected to SDS PAGE followed by western blot with FNab04369(INVS antibody) at dilution of 1:100