

## INTS3 antibody

### Product Information

Catalog No.:	FNab04361
Size:	100µg
Form:	liquid
Purification:	Immunogen affinity purified
Purity:	≥95% as determined by SDS-PAGE
Host:	Rabbit
Clonality:	polyclonal
Clone ID:	None
IsoType:	IgG
Storage:	PBS with 0.02% sodium azide and 50% glycerol pH 7.3, -20°C for 12 months(Avoid repeated freeze / thaw cycles.)

### Background

Component of the Integrator complex. The Integrator complex is involved in the small nuclear RNAs(snRNA) U1 and U2 transcription and in their 3'-box-dependent processing. The Integrator complex is associated with the C-terminal domain(CTD) of RNA polymerase II largest subunit(POLR2A) and is recruited to the U1 and U2 snRNAs genes. Component of the SOSS complex, a multiprotein complex that functions downstream of the MRN complex to promote DNA repair and G2/M checkpoint. The SOSS complex associates with single-stranded DNA at DNA lesions and influences diverse endpoints in the cellular DNA damage response including cell-cycle checkpoint activation, recombinational repair and maintenance of genomic stability. The SOSS complex is required for efficient homologous recombination-dependent repair of double-strand breaks(DSBs) and ATM-dependent signaling pathways. In the SOSS complex, it is required for the assembly of the complex and for stabilization of the complex at DNA damage sites.

### Immunogen information

Immunogen:	integrator complex subunit 3
Synonyms:	Integrator complex subunit 3 (Int3) SOSS complex subunit A Sensor of single-strand DNA complex subunit A (SOSS-A, Sensor of ssDNA subunit A) INTS3 C1orf193 C1orf60
Observed MW:	118 kDa
Uniprot ID :	Q68E01

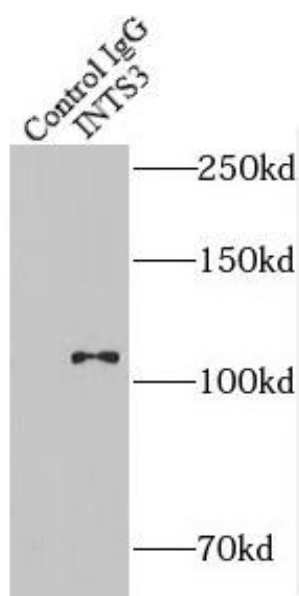
## Application

Reactivity: Human, Mouse, Rat

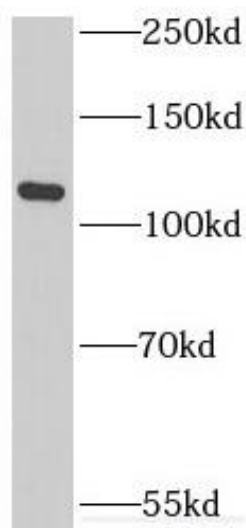
Tested Application: ELISA, WB, IP

Recommended dilution: WB: 1:500-1:2000; IP: 1:200-1:2000

Image:



IP Result of anti-INTS3 (IP:FNab04361, 4ug;  
Detection:FNab04361 1:500) with mouse testis  
tissue lysate 4000ug.



HeLa cells were subjected to SDS PAGE followed  
by western blot with FNab04361(INTS3 antibody)  
at dilution of 1:500