

## ITGB1 antibody

### Product Information

Catalog No.:	FNab04349
Size:	100µg
Form:	liquid
Purification:	Immunogen affinity purified
Purity:	≥95% as determined by SDS-PAGE
Host:	Rabbit
Clonality:	polyclonal
Clone ID:	None
IsoType:	IgG
Storage:	PBS with 0.02% sodium azide and 50% glycerol pH 7.3, -20°C for 12 months(Avoid repeated freeze / thaw cycles.)

### Background

Integrin beta-1(ITGB1), also named as CD29, is a 130 kDa single chain type I glycoprotein that is expressed in a heterodimeric complex with one of six distinct  $\alpha$  subunits, comprising the very late activation antigen(VLA) subfamily of adhesion receptors. It is one of the essential surface molecules expressed on human MSC from bone marrow and other sources. The  $\beta$ 1 subunit is also broadly expressed on lymphocytes and monocytes, weakly expressed on granulocytes, and not expressed on erythrocytes. These receptors are involved in a variety of cell-cell and cell-matrix interactions.

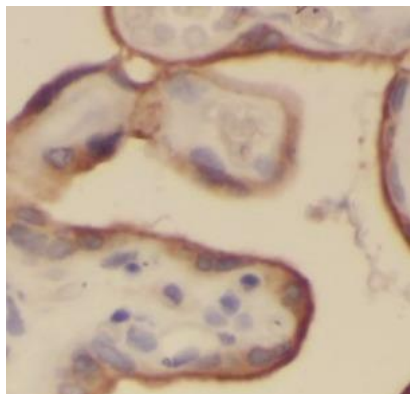
### Immunogen information

Immunogen:	integrin, beta 1
Synonyms:	Integrin beta-1 Fibronectin receptor subunit beta Glycoprotein IIa (GPIIA) VLA-4 subunit beta ITGB1 FNRB MDF2 MSK12
Observed MW:	130 kDa, 100 kDa
Uniprot ID :	P05556

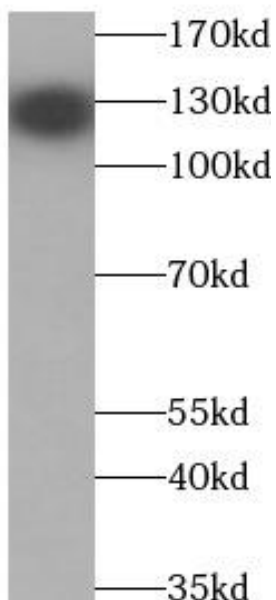
### Application

Reactivity:	Human, Mouse, Rat
Tested Application:	ELISA, WB,IHC
Recommended dilution:	WB: 1:1000-1:4000; IHC: 1:50-1:500

Image:



Immunohistochemistry of paraffin-embedded human placenta tissue slide using FNab04349(Integrin beta-1 Antibody) at dilution of 1:200



HT-1080 cells were subjected to SDS PAGE followed by western blot with FNab04349(Integrin beta-1 antibody) at dilution of 1:2000