

INS antibody

Product Information

| | |
|---------------|--|
| Catalog No.: | FNab04338 |
| Size: | 100µg |
| Form: | liquid |
| Purification: | Immunogen affinity purified |
| Purity: | ≥95% as determined by SDS-PAGE |
| Host: | Rabbit |
| Clonality: | polyclonal |
| Clone ID: | None |
| IsoType: | IgG |
| Storage: | PBS with 0.02% sodium azide and 50% glycerol pH 7.3, -20°C for 12 months(Avoid repeated freeze / thaw cycles.) |

Background

Insulin is a peptide hormone, produced by beta cells of the pancreas, and is central to regulating carbohydrate and fat metabolism in the body. It participates in glucose utilization, protein synthesis and in the formation and storage of neutral lipids. Insulin is synthesized as a precursor molecule, proinsulin, which is processed prior to secretion. A-and B-peptides are joined together by a disulfide bond to form insulin, while the central portion of the precursor molecule is cleaved and released as the C-peptide. Defects in insulin results in type 1 diabetes mellitus. Insulin may also exist 36 kDa form corresponding to the hexameric insulin form.

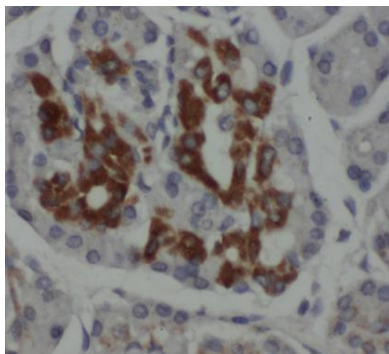
Immunogen information

| | |
|--------------|---|
| Immunogen: | insulin |
| Synonyms: | Insulin Insulin B chain Insulin A chain INS |
| Observed MW: | 36 kDa |
| Uniprot ID : | P01308 |

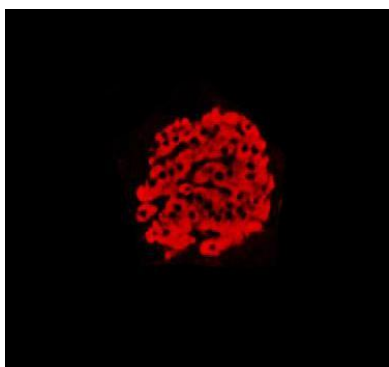
Application

| | |
|-----------------------|---|
| Reactivity: | Human, Mouse, Rat |
| Tested Application: | ELISA, WB, IHC, IF |
| Recommended dilution: | WB: 1:500-1:5000; IHC: 1:500-1:1000; IF: 1:100-1:1000 |

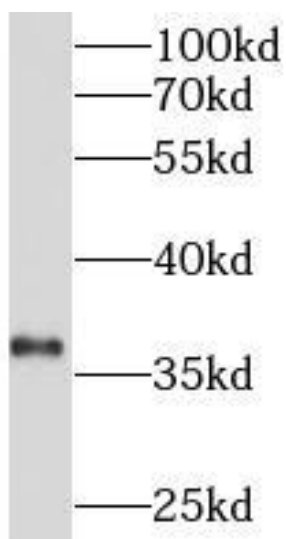
Image:



Immunohistochemistry of paraffin-embedded human pancreas using FNab04338(INS antibody) at dilution of 1:50



IF result of Insulin antibody (FNab04338, 1:500) with Rat pancreas.



mouse pancreas tissue were subjected to SDS PAGE followed by western blot with FNab04338(INS antibody) at dilution of 1:1000