

## INSC antibody

### Product Information

Catalog No.:	FNab04332
Size:	100µg
Form:	liquid
Purification:	Immunogen affinity purified
Purity:	≥95% as determined by SDS-PAGE
Host:	Rabbit
Clonality:	polyclonal
Clone ID:	None
IsoType:	IgG
Storage:	PBS with 0.02% sodium azide and 50% glycerol pH 7.3, -20°C for 12 months(Avoid repeated freeze / thaw cycles.)

### Background

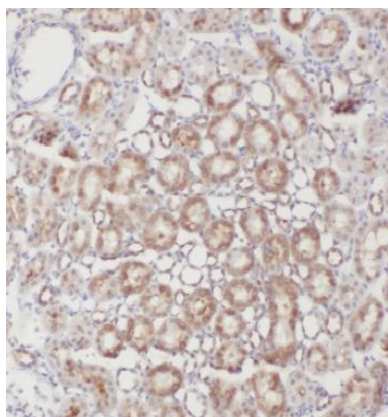
May function as an adapter linking the Par3 complex to the GPSM1/GPSM2 complex(PubMed:16458856). Involved in spindle orientation during mitosis. May regulate cell proliferation and differentiation in the developing nervous system. May play a role in the asymmetric division of fibroblasts and participate in the process of stratification of the squamous epithelium(By similarity).

### Immunogen information

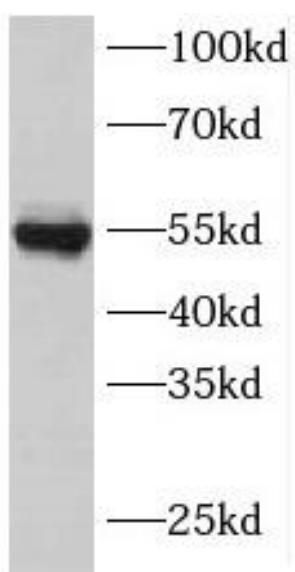
Immunogen:	inscuteable homolog(Drosophila)
Synonyms:	Protein inscuteable homolog INSC
Observed MW:	54 kDa
Uniprot ID :	Q1MX18

### Application

Reactivity:	Human, Mouse, Rat
Tested Application:	ELISA, WB, IHC, IF
Recommended dilution:	WB: 1:500-1:2000; IHC: 1:20-1:200; IF: 1:20-1:200
Image:	



Immunohistochemistry of paraffin-embedded human kidney using FNab04332(INSC antibody) at dilution of 1:50



mouse liver tissue were subjected to SDS PAGE followed by western blot with FNab04332(INSC antibody) at dilution of 1:1000