

## IL17RE antibody

### Product Information

|               |  |
|---------------|--|
| Catalog No.:  | FNab04232  |
| Size:         | 100µg  |
| Form:         | liquid   |
| Purification: | Immunogen affinity purified  |
| Purity:       | ≥95% as determined by SDS-PAGE   |
| Host:         | Rabbit   |
| Clonality:    | polyclonal   |
| Clone ID:     | None   |
| IsoType:      | IgG  |
| Storage:      | PBS with 0.02% sodium azide and 50% glycerol pH 7.3, -20°C for 12 months(Avoid repeated freeze / thaw cycles.) |

### Background

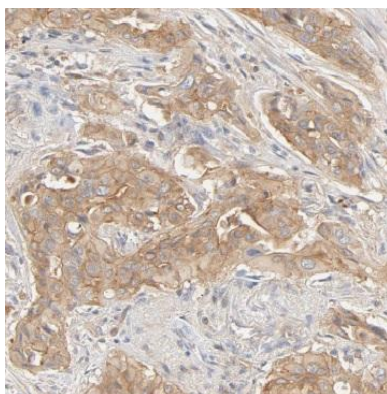
Specific functional receptor for IL17C. May be signaling through the NF-kappa-B and MAPK pathways. May require TRAF3IP2 /ACT1 for signaling. May be a crucial regulator in innate immunity to bacterial pathogens. Isoform 2 and isoform 4 may be either cytoplasmic inactive or dominant active forms. Isoform 3 and isoform 5 may act as soluble decoy receptors.

### Immunogen information

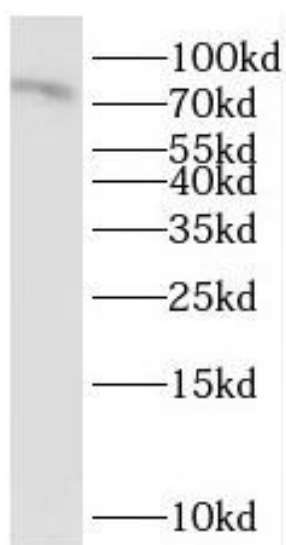
|              |  |
|--------------|--|
| Immunogen:   | interleukin 17 receptor E                                    |
| Synonyms:    | Interleukin-17 receptor E (IL-17 receptor E, IL-17RE) IL17RE |
| Observed MW: | 75 kDa   |
| Uniprot ID : | Q8NFR9   |

### Application

|                       |                                   |
|-----------------------|-----------------------------------|
| Reactivity:           | Human                             |
| Tested Application:   | ELISA, WB, IHC                    |
| Recommended dilution: | WB: 1:500-1:2000; IHC: 1:20-1:200 |
| Image:                |                                   |



Immunohistochemistry of paraffin-embedded human pancreas cancer using FNab04232(IL17RE antibody) at dilution of 1:50



human kidney tissue were subjected to SDS PAGE followed by western blot with FNab04232(IL17RE antibody) at dilution of 1:400