

IL15RA antibody

Product Information

Catalog No.:	FNab04222
Size:	100µg
Form:	liquid
Purification:	Immunogen affinity purified
Purity:	≥95% as determined by SDS-PAGE
Host:	Rabbit
Clonality:	polyclonal
Clone ID:	None
IsoType:	IgG
Storage:	PBS with 0.02% sodium azide and 50% glycerol pH 7.3, -20°C for 12 months(Avoid repeated freeze / thaw cycles.)

Background

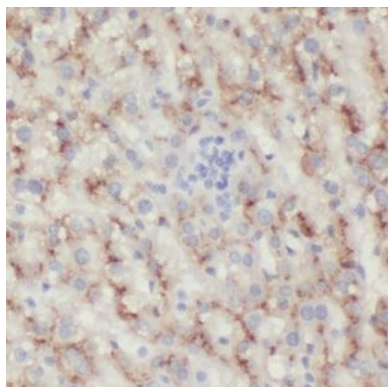
High-affinity receptor for interleukin-15. Can signal both in cis and trans where IL15R from one subset of cells presents IL15 to neighboring IL2RG-expressing cells. Expression of different isoforms may alter or interfere with signal transduction. Isoform 5, isoform 6, isoform 7 and isoform 8 do not bind IL15. Signal transduction involves SYK.

Immunogen information

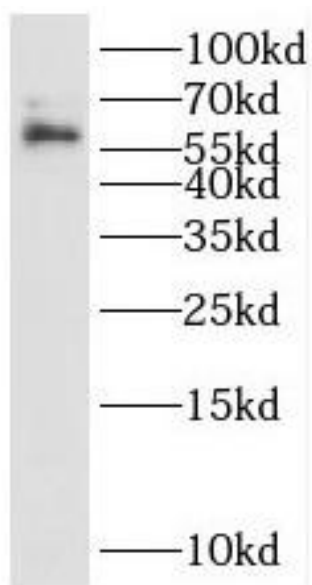
Immunogen:	interleukin 15 receptor, alpha
Synonyms:	Interleukin-15 receptor subunit alpha (IL-15 receptor subunit alpha, IL-15R-alpha, IL-15RA) Soluble interleukin-15 receptor subunit alpha (sIL-15 receptor subunit alpha, sIL-15R-alpha, sIL-15RA) IL15RA
Observed MW:	55-65 kDa
Uniprot ID :	Q13261

Application

Reactivity:	Human
Tested Application:	ELISA, WB, IHC
Recommended dilution:	WB: 1:500-1:2000; IHC: 1:20-1:200
Image:	



Immunohistochemistry of paraffin-embedded human liver using FNab04222(IL15RA antibody) at dilution of 1:50



HeLa cells were subjected to SDS PAGE followed by western blot with FNab04222(IL15RA antibody) at dilution of 1:500