

## IFT20 antibody

### Product Information

Catalog No.:	FNab04155
Size:	100µg
Form:	liquid
Purification:	Immunogen affinity purified
Purity:	≥95% as determined by SDS-PAGE
Host:	Rabbit
Clonality:	polyclonal
Clone ID:	None
IsoType:	IgG
Storage:	PBS with 0.02% sodium azide and 50% glycerol pH 7.3, -20°C for 12 months(Avoid repeated freeze / thaw cycles.)

### Background

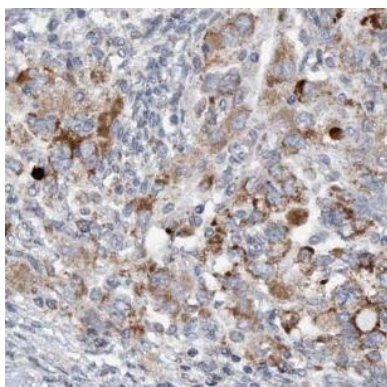
Part of intraflagellar transport(IFT) particles involved in ciliary process assembly. May play a role in the trafficking of ciliary membrane proteins from the Golgi complex to the cilium. Also involved in autophagy since it is required for trafficking of ATG16L and the expansion of the autophagic compartment.

### Immunogen information

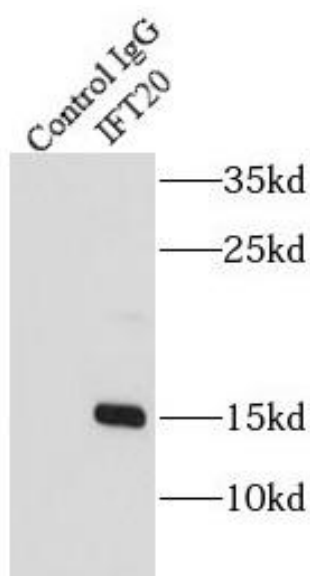
Immunogen:	intraflagellar transport 20 homolog(Chlamydomonas)
Synonyms:	Intraflagellar transport protein 20 homolog (hIFT20) IFT20
Observed MW:	15-18 kDa
Uniprot ID :	Q8IY31

### Application

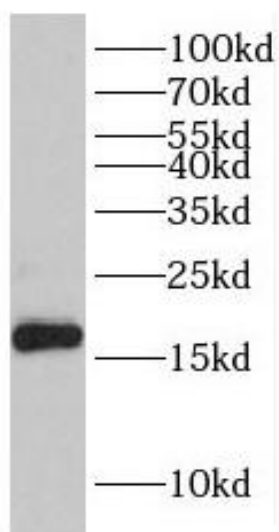
Reactivity:	Human, Mouse
Tested Application:	ELISA, IF, WB, IP, IHC
Recommended dilution:	WB: 1:500-1:2000; IP: 1:200-1:2000; IHC: 1:20-1:200; IF: 1:20-1:200
Image:	



Immunohistochemistry of paraffin-embedded human endometrial cancer tissue slide using FNab04155 (IFT20 Antibody) at dilution of 1:50



IP Result of anti-IFT20 (IP:FNab04155, 3ug; Detection:FNab04155 1:700) with mouse testis tissue lysate 4000ug.



mouse testis tissue were subjected to SDS PAGE followed by western blot with FNab04155 (IFT20 Antibody) at dilution of 1:600