

IFITM2 antibody

Product Information

Catalog No.:	FNab04142
Size:	100µg
Form:	liquid
Purification:	Immunogen affinity purified
Purity:	≥95% as determined by SDS-PAGE
Host:	Rabbit
Clonality:	polyclonal
Clone ID:	None
IsoType:	IgG
Storage:	PBS with 0.02% sodium azide and 50% glycerol pH 7.3, -20°C for 12 months(Avoid repeated freeze / thaw cycles.)

Background

IFN-induced antiviral protein which inhibits the entry of viruses to the host cell cytoplasm, permitting endocytosis, but preventing subsequent viral fusion and release of viral contents into the cytosol. Active against multiple viruses, including influenza A virus, SARS coronavirus(SARS-CoV), Marburg virus(MARV), Ebola virus(EBOV), Dengue virus(DNV), West Nile virus(WNV), human immunodeficiency virus type 1(HIV-1) and vesicular stomatitis virus(VSV). Can inhibit: influenza virus hemagglutinin protein-mediated viral entry, MARV and EBOV GP1,2-mediated viral entry, SARS-CoV S protein-mediated viral entry and VSV G protein-mediated viral entry. Induces cell cycle arrest and mediates apoptosis by caspase activation and in p53-independent manner.

Immunogen information

Immunogen:	interferon induced transmembrane protein 2
Synonyms:	Interferon-induced transmembrane protein 2 Dispanin subfamily A member 2c (DSPA2c) Interferon-inducible protein 1-8D IFITM2
Observed MW:	15 kDa
Uniprot ID :	Q01629

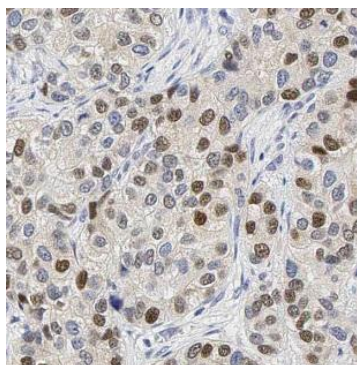
Application

Reactivity:	Human
-------------	-------

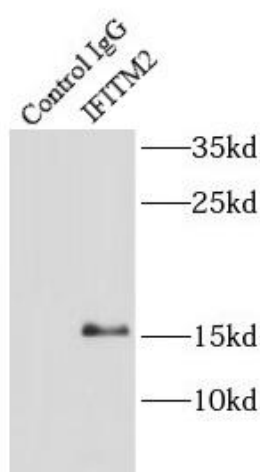
Tested Application: ELISA, IP, IHC, IF, WB

Recommended dilution: WB: 1:500-1:2000; IP: 1:200-1:1000; IHC: 1:20-1:200; IF: 1:20-1:200

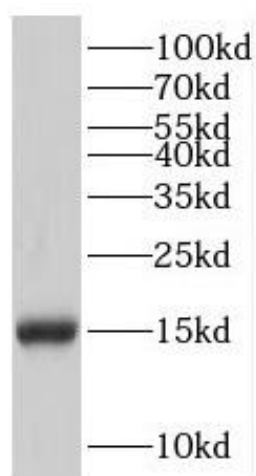
Image:



Immunohistochemistry of paraffin-embedded human breast cancer slide using FNab04142(IFITM2 Antibody) at dilution of 1:50



IP Result of anti-IFITM2 (IP:FNab04142, 3ug; Detection:FNab04142 1:300) with HepG2 cells lysate 1720ug.



MCF-7 cells were subjected to SDS PAGE followed by western blot with FNab04142(IFITM2 Antibody) at dilution of 1:2000