

IFITM1 antibody

Product Information

| | |
|---------------|--|
| Catalog No.: | FNab04140 |
| Size: | 100µg |
| Form: | liquid |
| Purification: | Immunogen affinity purified |
| Purity: | ≥95% as determined by SDS-PAGE |
| Host: | Rabbit |
| Clonality: | polyclonal |
| Clone ID: | None |
| IsoType: | IgG |
| Storage: | PBS with 0.02% sodium azide and 50% glycerol pH 7.3, -20°C for 12 months(Avoid repeated freeze / thaw cycles.) |

Background

IFN-induced antiviral protein which inhibits the entry of viruses to the host cell cytoplasm, permitting endocytosis, but preventing subsequent viral fusion and release of viral contents into the cytosol. Active against multiple viruses, including influenza A virus, SARS coronavirus(SARS-CoV), Marburg virus(MARV), Ebola virus(EBOV), Dengue virus(DNV), West Nile virus(WNV), human immunodeficiency virus type 1(HIV-1) and hepatitis C virus(HCV). Can inhibit: influenza virus hemagglutinin protein-mediated viral entry, MARV and EBOV GP1,2-mediated viral entry and SARS-CoV S protein-mediated viral entry. Also implicated in cell adhesion and control of cell growth and migration. Plays a key role in the antiproliferative action of IFN-gamma either by inhibiting the ERK activation or by arresting cell growth in G1 phase in a p53-dependent manner. Acts as a positive regulator of osteoblast differentiation.

Immunogen information

| | |
|--------------|--|
| Immunogen: | interferon induced transmembrane protein 1(9-27) |
| Synonyms: | Interferon-induced transmembrane protein 1 Dispanin subfamily A member 2a (DSPA2a) Interferon-induced protein 17 Interferon-inducible protein 9-27 Leu-13 antigen IFITM1 CD225 IFI17 |
| Observed MW: | 17-19 kDa |
| Uniprot ID : | P13164 |

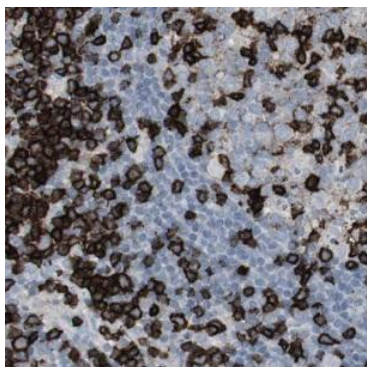
Application

Reactivity: Human

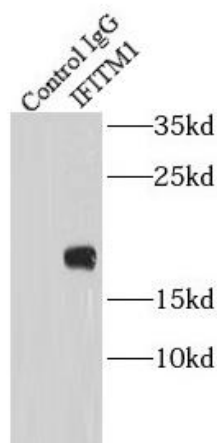
Tested Application: ELISA, WB, IHC, IP

Recommended dilution: WB: 1:500-1:2000; IP: 1:200-1:1000; IHC: 1:20-1:200

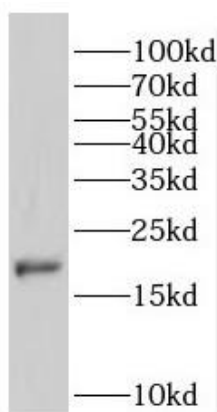
Image:



Immunohistochemistry of paraffin-embedded human lymphoma using FNab04140(IFITM1 antibody) at dilution of 1:50



IP Result of anti-IFITM1 (IP:FNab04140, 4ug; Detection:FNab04140 1:500) with ROS1728 cells lysate 3200ug.



K-562 cells were subjected to SDS PAGE followed by western blot with FNab04140(IFITM1 antibody) at dilution of 1:500