

HTRA2 antibody

Product Information

| | |
|---------------|--|
| Catalog No.: | FNab04070 |
| Size: | 100µg |
| Form: | liquid |
| Purification: | Immunogen affinity purified |
| Purity: | ≥95% as determined by SDS-PAGE |
| Host: | Rabbit |
| Clonality: | polyclonal |
| Clone ID: | None |
| IsoType: | IgG |
| Storage: | PBS with 0.02% sodium azide and 50% glycerol pH 7.3, -20°C for 12 months(Avoid repeated freeze / thaw cycles.) |

Background

Serine protease that shows proteolytic activity against a non-specific substrate beta-casein. Promotes or induces cell death either by direct binding to and inhibition of BIRC proteins(also called inhibitor of apoptosis proteins, IAPs), leading to an increase in caspase activity, or by a BIRC inhibition-independent, caspase-independent and serine protease activity-dependent mechanism. Cleaves THAP5 and promotes its degradation during apoptosis. Isoform 2 seems to be proteolytically inactive.

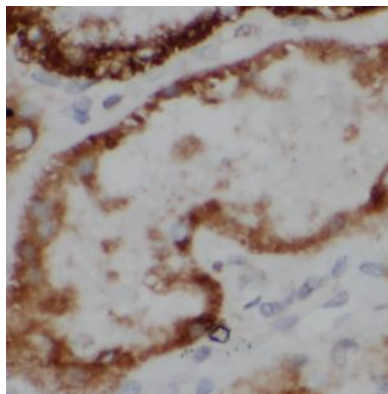
Immunogen information

| | |
|--------------|--|
| Immunogen: | HtrA serine peptidase 2 |
| Synonyms: | Serine protease HTRA2, mitochondrial High temperature requirement protein A2 (HtrA2) Omi stress-regulated endoprotease Serine protease 25 Serine proteinase OMI HTRA2 OMI PRSS25 |
| Observed MW: | 36 kDa |
| Uniprot ID : | O43464 |

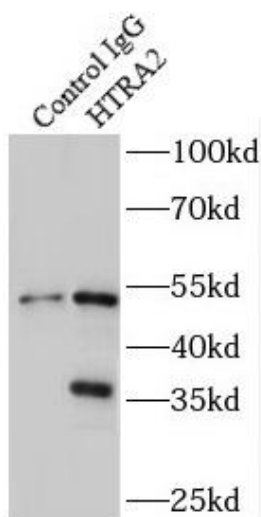
Application

| | |
|-----------------------|---|
| Reactivity: | Human, Mouse, Rat, Monkey |
| Tested Application: | ELISA, WB, IHC, IP |
| Recommended dilution: | WB: 1:500-1:2000; IP: 1:500-1:1000; IHC: 1:20-1:200 |

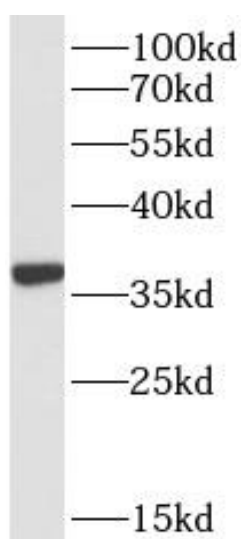
Image:



Immunohistochemistry of paraffin-embedded human kidney using FNab04070(HTRA2 antibody) at dilution of 1:100



IP Result of anti-HTRA2 (IP:FNab04070, 4ug; Detection:FNab04070 1:500) with Raji cells lysate 2000ug.



HEK-293 cells were subjected to SDS PAGE followed by western blot with FNab04070(HTRA2 antibody) at dilution of 1:2000