

HTRA1 antibody

Product Information

Catalog No.:	FNab04069
Size:	100µg
Form:	liquid
Purification:	Immunogen affinity purified
Purity:	≥95% as determined by SDS-PAGE
Host:	Rabbit
Clonality:	polyclonal
Clone ID:	None
IsoType:	IgG
Storage:	PBS with 0.02% sodium azide and 50% glycerol pH 7.3, -20°C for 12 months(Avoid repeated freeze / thaw cycles.)

Background

Serine protease with a variety of targets, including extracellular matrix proteins such as fibronectin. HTRA1-generated fibronectin fragments further induce synovial cells to up-regulate MMP1 and MMP3 production. May also degrade proteoglycans, such as aggrecan, decorin and fibromodulin. Through cleavage of proteoglycans, may release soluble FGF-glycosaminoglycan complexes that promote the range and intensity of FGF signals in the extracellular space. Regulates the availability of insulin-like growth factors(IGFs) by cleaving IGF-binding proteins. Inhibits signaling mediated by TGF-beta family members. This activity requires the integrity of the catalytic site, although it is unclear whether TGF-beta proteins are themselves degraded. By acting on TGF-beta signaling, may regulate many physiological processes, including retinal angiogenesis and neuronal survival and maturation during development. Intracellularly, degrades TSC2, leading to the activation of TSC2 downstream targets.

Immunogen information

Immunogen:	HtrA serine peptidase 1
Synonyms:	Serine protease HTRA1 High-temperature requirement A serine peptidase 1 L56 Serine protease 11 HTRA1 HTRA PRSS11
Observed MW:	35 kDa, 50kD, 42 kDa
Uniprot ID :	Q92743

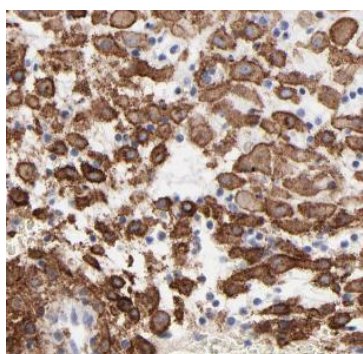
Application

Reactivity: Human, Mouse, Rat

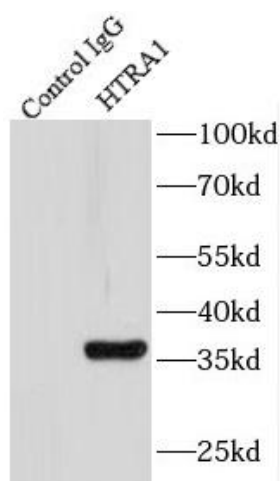
Tested Application: ELISA, WB, IF, IP, IHC

Recommended dilution: WB: 1:500-1:2000; IP: 1:200-1:1000; IHC: 1:20-1:200; IF: 1:20-1:200

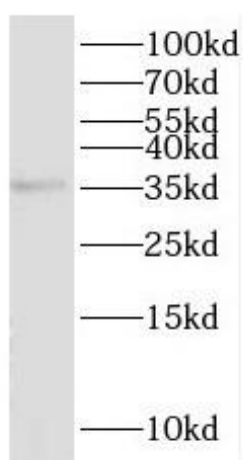
Image:



Immunohistochemistry of paraffin-embedded human placenta tissue slide using FNab04069(HTRA1 Antibody) at dilution of 1:200



IP Result of anti-HTRA1 (IP:FNab04069, 4ug; Detection:FNab04069 1:500) with L02 cells lysate 1400ug.



L02 cells were subjected to SDS PAGE followed by western blot with FNab04069(HTRA1 antibody) at dilution of 1:600