

HSP90AA1 antibody

Product Information

| | |
|---------------|--|
| Catalog No.: | FNab04052 |
| Size: | 100µg |
| Form: | liquid |
| Purification: | Protein A+G purification |
| Purity: | ≥95% as determined by SDS-PAGE |
| Host: | Mouse |
| Clonality: | monoclonal |
| Clone ID: | 4G10 |
| IsoType: | IgG1 |
| Storage: | PBS with 0.02% sodium azide and 50% glycerol pH 7.3, -20°C for 12 months(Avoid repeated freeze / thaw cycles.) |

Background

HSP90, encoded by HSP90AA1, is a constitutively and ubiquitously expressed molecular chaperone that is crucial for the stability and function of many proteins. HSP90 provides chaperoning activity for client proteins; many of them are members of oncogenic pathways, indicating its implication in tumor malignancy. HSP90 mainly resides in the cytosol, while it can also be released to the extracellular space. Secreted Hsp90 is a C-terminal truncated form. It has been reported that the level of plasma Hsp90 is positively correlated with tumor malignancy in clinical cancer patients, and can be a promising diagnostic marker for tumor malignancy in clinical application.

Immunogen information

| | |
|--------------|---|
| Immunogen: | heat shock protein 90kDa alpha(cytosolic), class A member 1 |
| Synonyms: | Heat shock protein HSP 90-alpha Heat shock 86 kDa (HSP 86, HSP86) Lipopolysaccharide-associated protein 2 (LAP-2, LPS-associated protein 2) Renal carcinoma antigen NY-REN-38 HSP90AA1 HSP90A HSPC1 HSPCA |
| Observed MW: | 90 kDa |
| Uniprot ID : | P07900 |

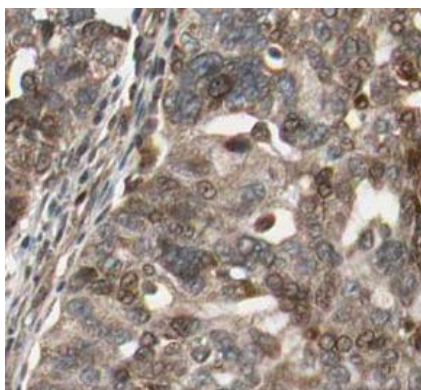
Application

| | |
|-------------|-------------------|
| Reactivity: | Human, Mouse, Rat |
|-------------|-------------------|

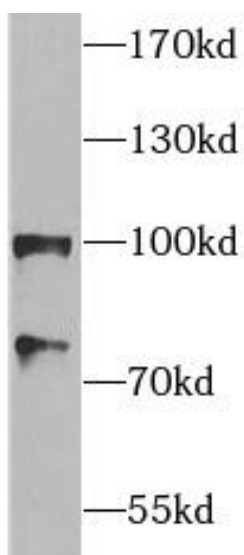
Tested Application: ELISA, WB, IHC, FC

Recommended dilution: WB: 1:1000-1:8000; IHC: 1:50-1:500

Image:



Immunohistochemistry of paraffin-embedded human ovary tumor tissue slide using FNab04052(HSP90 Antibody) at dilution of 1:200



HeLa cells were subjected to SDS PAGE followed by western blot with FNab04052(HSP90 Antibody) at dilution of 1:4000