

HPSE antibody

Product Information

Catalog No.:	FNab04004
Size:	100µg
Form:	liquid
Purification:	Immunogen affinity purified
Purity:	≥95% as determined by SDS-PAGE
Host:	Rabbit
Clonality:	polyclonal
Clone ID:	None
IsoType:	IgG
Storage:	PBS with 0.02% sodium azide and 50% glycerol pH 7.3, -20°C for 12 months(Avoid repeated freeze / thaw cycles.)

Background

Endoglycosidase that cleaves heparan sulfate proteoglycans(HSPGs) into heparan sulfate side chains and core proteoglycans. Participates in extracellular matrix(ECM) degradation and remodeling. Selectively cleaves the linkage between a glucuronic acid unit and an N-sulfo glucosamine unit carrying either a 3-O-sulfo or a 6-O-sulfo group. Can also cleave the linkage between a glucuronic acid unit and an N-sulfo glucosamine unit carrying a 2-O-sulfo group, but not linkages between a glucuronic acid unit and a 2-O-sulfated iduronic acid moiety. It is essentially inactive at neutral pH but becomes active under acidic conditions such as during tumor invasion and in inflammatory processes. Facilitates cell migration associated with metastasis, wound healing and inflammation. Enhances shedding of syndecans, and increases endothelial invasion and angiogenesis in myelomas. Acts as procoagulant by increasing the generation of activation factor X in the presence of tissue factor and activation factor VII. Increases cell adhesion to the extacellular matrix(ECM), independent of its enzymatic activity. Induces AKT1/PKB phosphorylation via lipid rafts increasing cell mobility and invasion. Heparin increases this AKT1/PKB activation. Regulates osteogenesis. Enhances angiogenesis through up-regulation of SRC-mediated activation of VEGF. Implicated in hair follicle inner root sheath differentiation and hair homeostasis.

Immunogen information

Immunogen:	heparanase
Synonyms:	Heparanase Endo-glucoronidase Heparanase-1 (Hpa1) Heparanase 8 kDa subunit Heparanase 50 kDa subunit HPSE HEP HPA HPA1 HPR1 HPSE1 HSE1

Observed MW: 60 kDa
Uniprot ID : Q9Y251

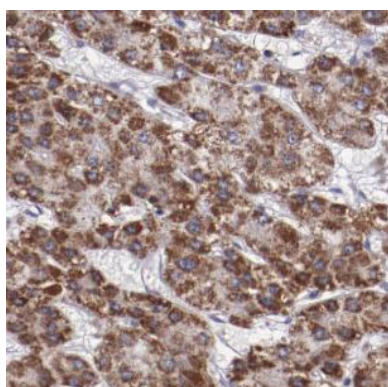
Application

Reactivity: Human, Mouse

Tested Application: ELISA, WB, IHC, IF

Recommended dilution: WB: 1:500-1:2000; IHC: 1:20-1:200; IF: 1:20-1:200

Image:



Immunohistochemistry of paraffin-embedded human liver cancer slide using FNab04004(HPSE Antibody) at dilution of 1:50



Jurkat cells were subjected to SDS PAGE followed by western blot with FNab04004(HPSE Antibody) at dilution of 1:1000