

ERBB2 antibody

Product Information

Catalog No.:	FNab03833
Size:	100µg
Form:	liquid
Purification:	Immunogen affinity purified
Purity:	≥95% as determined by SDS-PAGE
Host:	Rabbit
Clonality:	polyclonal
Clone ID:	None
IsoType:	IgG
Storage:	PBS with 0.02% sodium azide and 50% glycerol pH 7.3, -20°C for 12 months(Avoid repeated freeze / thaw cycles.)

Background

HER2, also known as ErbB2 and Neu, is a 185-kDa transmembrane glycoprotein that is a member of the epidermal growth factor(EGF) receptor family of receptor tyrosine kinases. It has no ligand binding domain of its own and therefore cannot bind growth factors. However, it does bind tightly to other ligand-bound EGF receptor family members to form a heterodimer, stabilizing ligand binding and enhancing kinase-mediated activation of downstream signalling pathways, such as those involving mitogen-activated protein kinase and phosphatidylinositol-3 kinase. Amplification and/or overexpression of HER2 have been reported in numerous cancers, including breast and ovarian tumors. HER2 is a therapeutic target for the treatment of breast cancer and other carcinomas. This antibody raised against a synthesized peptide corresponding to 1237-1255aa of human HER2 recognizes the 185-kDa full-length glycosylated form and other lower molecular-mass forms of HER2, including the truncated form.

Immunogen information

Immunogen:	v-erb-b2 erythroblastic leukemia viral oncogene homolog 2, neuro/glioblastoma derived oncogene homolog(avian)
Synonyms:	Receptor tyrosine-protein kinase erbB-2 Metastatic lymph node gene 19 protein (MLN 19) Proto-oncogene Neu Proto-oncogene c-ErbB-2 Tyrosine kinase-type cell surface receptor HER2 p185erbB2 ERBB2 HER2 MLN19 NEU NGL
Observed MW:	185 kDa
Uniprot ID :	P04626

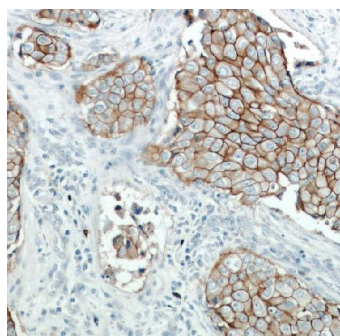
Application

Reactivity: Human, Mouse

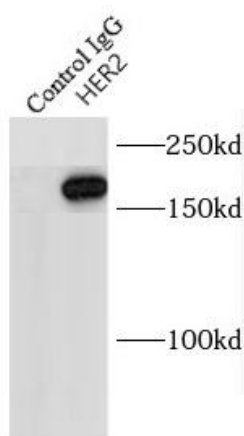
Tested Application: ELISA, WB, IHC, FC, IP

Recommended dilution: WB: 1:1000-1:10000; IP: 1:200-1:2000; IHC: 1:50-1:200

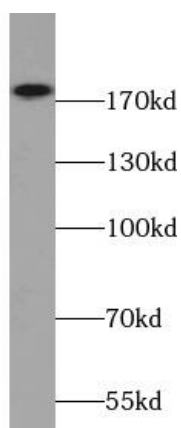
Image:



Immunohistochemistry of paraffin-embedded human breast cancer using FNab03833(ERBB2 antibody) at dilution of 1:50



IP Result of anti-HER2/ErbB2 (IP:FNab03833, 5ug; Detection:FNab03833 1:500) with SGC-7901 cells lysate 2400ug.



HeLa cells were subjected to SDS PAGE followed by western blot with FNab03833(ERBB2 antibody) at dilution of 1:300