

HBE1 antibody

Product Information

Catalog No.:	FNab03826
Size:	100µg
Form:	liquid
Purification:	Immunogen affinity purified
Purity:	≥95% as determined by SDS-PAGE
Host:	Rabbit
Clonality:	polyclonal
Clone ID:	None
IsoType:	IgG
Storage:	PBS with 0.02% sodium azide and 50% glycerol pH 7.3, -20°C for 12 months(Avoid repeated freeze / thaw cycles.)

Background

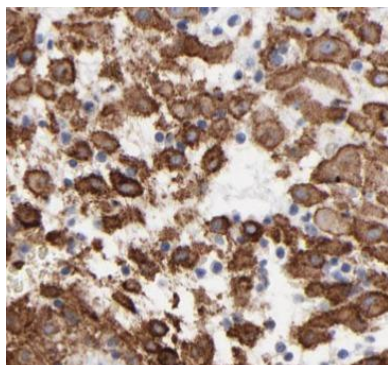
The hemoglobin molecule is a tetramer consisting of two alpha-and two beta-globin-like chains. HBE1(hemoglobin epsilon chain) is a beta-type chain of hemoglobin predominantly expressed during the embryonic stage(21321359). The HBE1 has been regarded as the best marker for fetal nucleated red blood cells(NRBCs) . This antibody can be used to label and isolate fetal cells from maternal blood and may be useful in prenatal diagnosis(15906407).

Immunogen information

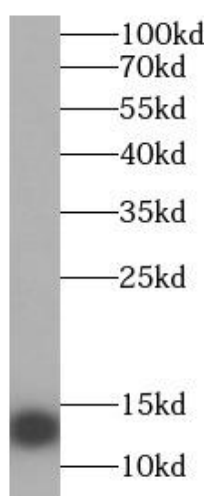
Immunogen:	hemoglobin, epsilon 1
Synonyms:	Hemoglobin subunit epsilon Epsilon-globin Hemoglobin epsilon chain HBE1 HBE
Observed MW:	12-16 kDa
Uniprot ID :	P02100

Application

Reactivity:	Human, Mouse, Rat
Tested Application:	ELISA, WB, IHC
Recommended dilution:	WB: 1:500-1:2000; IHC: 1:20-1:200
Image:	



Immunohistochemistry of paraffin-embedded human placenta using FNab03826(HBE1 antibody) at dilution of 1:50



human placenta tissue were subjected to SDS PAGE followed by western blot with FNab03826(HBE1 antibody) at dilution of 1:1000