

GTF2IRD1 antibody

Product Information

Catalog No.:	FNab03716
Size:	100µg
Form:	liquid
Purification:	Immunogen affinity purified
Purity:	≥95% as determined by SDS-PAGE
Host:	Rabbit
Clonality:	polyclonal
Clone ID:	None
IsoType:	IgG
Storage:	PBS with 0.02% sodium azide and 50% glycerol pH 7.3, -20°C for 12 months(Avoid repeated freeze / thaw cycles.)

Background

May be a transcription regulator involved in cell-cycle progression and skeletal muscle differentiation. May repress GTF2I transcriptional functions, by preventing its nuclear residency, or by inhibiting its transcriptional activation. May contribute to slow-twitch fiber type specificity during myogenesis and in regenerating muscles. Binds troponin I slow-muscle fiber enhancer(USE B1). Binds specifically and with high affinity to the EFG sequences derived from the early enhancer of HOXC8(By similarity).

Immunogen information

Immunogen:	GTF2I repeat domain containing 1
Synonyms:	General transcription factor II-I repeat domain-containing protein 1 (GTF2I repeat domain-containing protein 1) General transcription factor III MusTRD1/BEN Muscle TFII-I repeat domain-containing protein 1 Slow-muscle-fiber enhancer-binding protein USE B1-binding protein Williams-Beuren syndrome chromosomal region 11 protein Williams-Beuren syndrome chromosomal region 12 protein GTF2IRD1 CREAM1 GTF3 MUSTRD1 RBAP2 WBSCR11 WBSCR12
Observed MW:	145 kDa, 120 kDa
Uniprot ID :	Q9UHL9

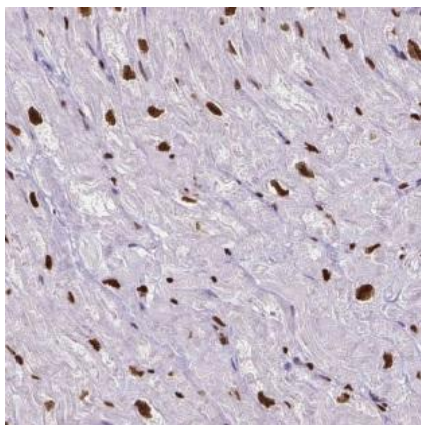
Application

Reactivity: Human, Mouse, Rat

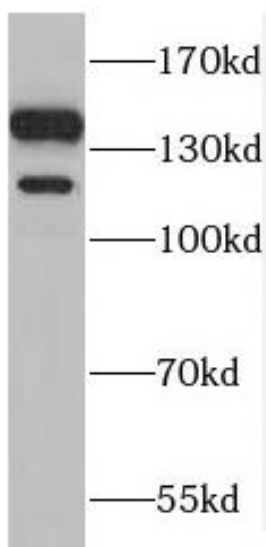
Tested Application: ELISA, WB, IHC

Recommended dilution: WB: 1:500-1:2000; IHC: 1:20-1:200

Image:



Immunohistochemistry of paraffin-embedded human heart using FNab03716(GTF2IRD1 antibody) at dilution of 1:100



HeLa cells were subjected to SDS PAGE followed by western blot with FNab03716(GTF2IRD1 antibody) at dilution of 1:500