

GPD1L antibody

Product Information

Catalog No.:	FNab03580
Size:	100µg
Form:	liquid
Purification:	Immunogen affinity purified
Purity:	≥95% as determined by SDS-PAGE
Host:	Rabbit
Clonality:	polyclonal
Clone ID:	None
IsoType:	IgG
Storage:	PBS with 0.02% sodium azide and 50% glycerol pH 7.3, -20°C for 12 months(Avoid repeated freeze / thaw cycles.)

Background

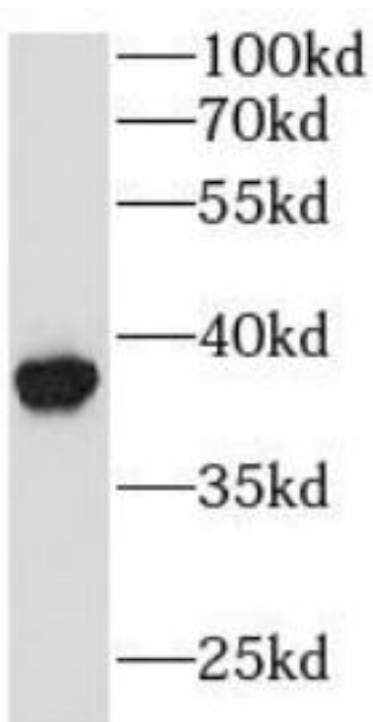
Plays a role in regulating cardiac sodium current; decreased enzymatic activity with resulting increased levels of glycerol 3-phosphate activating the GPD1L-dependent SCN5A phosphorylation pathway, may ultimately lead to decreased sodium current; cardiac sodium current may also be reduced due to alterations of NAD(H) balance induced by GPD1L.

Immunogen information

Immunogen:	glycerol-3-phosphate dehydrogenase 1-like
Synonyms:	Glycerol-3-phosphate dehydrogenase 1-like protein (GPD1-L) GPD1L KIAA0089
Observed MW:	38-40 kDa
Uniprot ID :	Q8N335

Application

Reactivity:	Human, Mouse, Rat
Tested Application:	ELISA, WB
Recommended dilution:	WB: 1:500 - 1:2000
Image:	



mouse stomach tissue were subjected to SDS
PAGE followed by western blot with
FNab03580(GPD1L antibody) at dilution of
1:1000