

GLRB antibody

Product Information

Catalog No.:	FNab03489
Size:	100µg
Form:	liquid
Purification:	Immunogen affinity purified
Purity:	≥95% as determined by SDS-PAGE
Host:	Rabbit
Clonality:	polyclonal
Clone ID:	None
IsoType:	IgG
Storage:	PBS with 0.02% sodium azide and 50% glycerol pH 7.3, -20°C for 12 months(Avoid repeated freeze / thaw cycles.)

Background

Glycine receptors are ligand-gated chloride channels. GLRB does not form ligand-gated ion channels by itself, but is part of heteromeric ligand-gated chloride channels. Channel opening is triggered by extracellular glycine(PubMed:8717357, PubMed:15302677, PubMed:16144831, PubMed:22715885, PubMed:25445488, PubMed:11929858, PubMed:23238346).

Heteropentameric channels composed of GLRB and GLRA1 are activated by lower glycine levels than homopentameric GLRA1(PubMed:8717357). Plays an important role in the down-regulation of neuronal excitability(PubMed:11929858, PubMed:23238346). Contributes to the generation of inhibitory postsynaptic currents(PubMed:25445488).

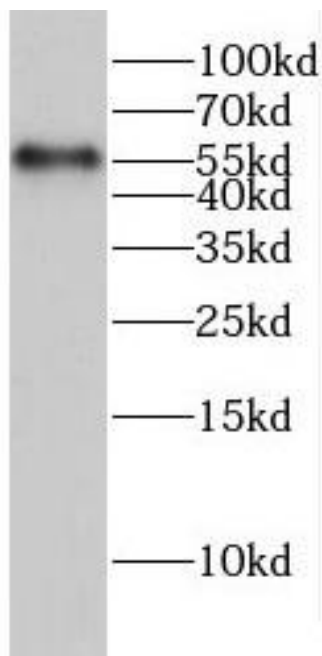
Immunogen information

Immunogen:	glycine receptor, beta
Synonyms:	Glycine receptor subunit beta Glycine receptor 58 kDa subunit GLRB
Observed MW:	56 kDa
Uniprot ID :	P48167

Application

Reactivity:	Human, Mouse
Tested Application:	ELISA, WB
Recommended dilution: WB:	1:500-1:2000

Image:



mouse brain tissue were subjected to SDS PAGE followed by western blot with FNab03489(GLRB Antibody) at dilution of 1:1000