

## GLRA1 antibody

### Product Information

Catalog No.:	FNab03486
Size:	100µg
Form:	liquid
Purification:	Immunogen affinity purified
Purity:	≥95% as determined by SDS-PAGE
Host:	Rabbit
Clonality:	polyclonal
Clone ID:	None
IsoType:	IgG
Storage:	PBS with 0.02% sodium azide and 50% glycerol pH 7.3, -20°C for 12 months(Avoid repeated freeze / thaw cycles.)

### Background

Glycine receptors are ligand-gated chloride channels(PubMed:23994010, PubMed:25730860). Channel opening is triggered by extracellular glycine(PubMed:2155780, PubMed:7920629, PubMed:14551753, PubMed:16144831, PubMed:22715885, PubMed:22973015, PubMed:25973519, PubMed:9009272). Channel opening is also triggered by taurine and beta-alanine(PubMed:16144831, PubMed:9009272). Channel characteristics depend on the subunit composition; heteropentameric channels are activated by lower glycine levels and display faster desensitization(PubMed:14551753). Plays an important role in the down-regulation of neuronal excitability(PubMed:8298642, PubMed:9009272). Contributes to the generation of inhibitory postsynaptic currents(PubMed:25445488). Channel activity is potentiated by ethanol(PubMed:25973519). Potentiation of channel activity by intoxicating levels of ethanol contribute to the sedative effects of ethanol(By similarity).

### Immunogen information

Immunogen:	glycine receptor, alpha 1
Synonyms:	Glycine receptor subunit alpha-1 Glycine receptor 48 kDa subunit Glycine receptor strychnine-binding subunit GLRA1
Observed MW:	48 kDa
Uniprot ID :	P23415

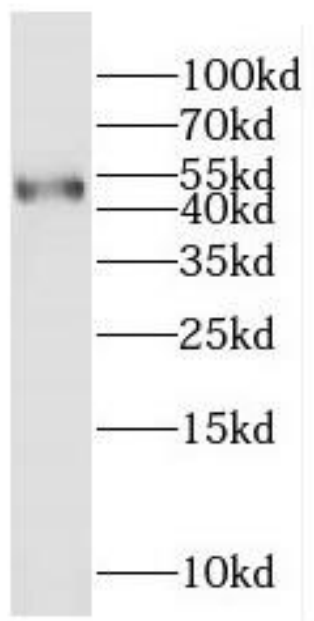
### Application

Reactivity: Human, Mouse, Rat

Tested Application: ELISA, WB

Recommended dilution: WB: 1:500-1:2000

Image:



mouse brain tissue were subjected to SDS PAGE followed by western blot with FNab03486(GLRA1 antibody) at dilution of 1:500