

## GLI2-Specific antibody

### Product Information

Catalog No.:	FNab03477
Size:	100µg
Form:	liquid
Purification:	Immunogen affinity purified
Purity:	≥95% as determined by SDS-PAGE
Host:	Rabbit
Clonality:	polyclonal
Clone ID:	None
IsoType:	IgG
Storage:	PBS with 0.02% sodium azide and 50% glycerol pH 7.3, -20°C for 12 months(Avoid repeated freeze / thaw cycles.)

### Background

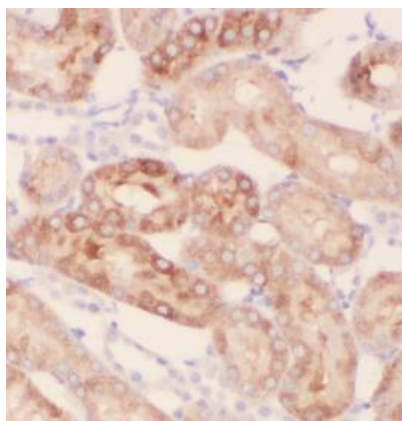
None

### Immunogen information

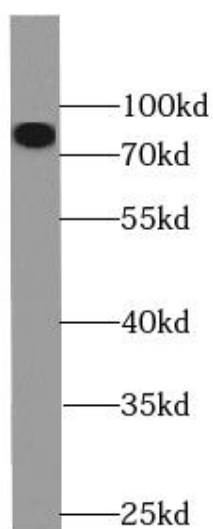
Immunogen:	GLI-Kruppel family member GLI2
Synonyms:	Zinc finger protein GLI2 GLI family zinc finger protein 2 Tax helper protein GLI2 THP
Observed MW:	88 kDa
Uniprot ID :	P10070

### Application

Reactivity:	Human, Mouse, Rat
Tested Application:	ELISA, WB, IHC, IF
Recommended dilution:	WB: 1:500-1:1000; IHC: 1:20-1:200; IF: 1:10-1:100
Image:	



Immunohistochemistry of paraffin-embedded human kidney using FNab03477(GLI2-Specific antibody) at dilution of 1:50



HEK-293 cells were subjected to SDS PAGE followed by western blot with FNab03477(GLI2-Specific antibody) at dilution of 1:400