

## GLDC antibody

### Product Information

Catalog No.:	FNab03476
Size:	100µg
Form:	liquid
Purification:	Immunogen affinity purified
Purity:	≥95% as determined by SDS-PAGE
Host:	Rabbit
Clonality:	polyclonal
Clone ID:	None
IsoType:	IgG
Storage:	PBS with 0.02% sodium azide and 50% glycerol pH 7.3, -20°C for 12 months(Avoid repeated freeze / thaw cycles.)

### Background

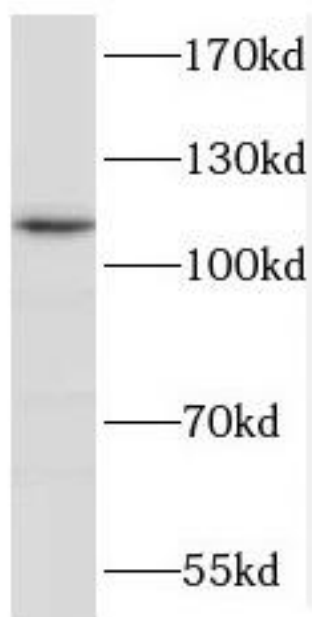
The glycine cleavage system catalyzes the degradation of glycine. The P protein(GLDC) binds the alpha-amino group of glycine through its pyridoxal phosphate cofactor; CO(2) is released and the remaining methylamine moiety is then transferred to the lipoamide cofactor of the H protein(GCSH).

### Immunogen information

Immunogen:	glycine dehydrogenase(decarboxylating)
Synonyms:	Glycine dehydrogenase (decaboxylating), mitochondrial Glycine cleavage system P protein Glycine decarboxylase Glycine dehydrogenase (aminomethyl-transferring) GLDC GCSP
Observed MW:	113 kDa
Uniprot ID :	P23378

### Application

Reactivity:	Human, Mouse
Tested Application:	ELISA, WB
Recommended dilution: WB:	1:500-1:2000
Image:	



mouse liver tissue were subjected to SDS PAGE followed by western blot with FNab03476( GLDC Antibody) at dilution of 1:1000