

SLX1A antibody

Product Information

Catalog No.:	FNab03466
Size:	100µg
Form:	liquid
Purification:	Immunogen affinity purified
Purity:	≥95% as determined by SDS-PAGE
Host:	Rabbit
Clonality:	polyclonal
Clone ID:	None
IsoType:	IgG
Storage:	PBS with 0.02% sodium azide and 50% glycerol pH 7.3, -20°C for 12 months(Avoid repeated freeze / thaw cycles.)

Background

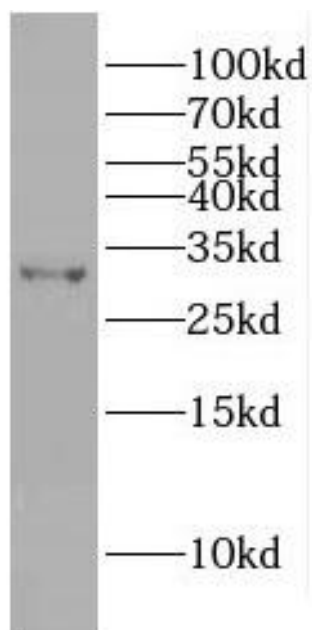
None

Immunogen information

Immunogen:	GIY-YIG domain containing 2
Synonyms:	Structure-specific endonuclease subunit SLX1 GIY-YIG domain-containing protein 1 SLX1A GIYD1 SLX1
Observed MW:	31 kDa
Uniprot ID :	Q9BQ83

Application

Reactivity:	Human, Mouse
Tested Application:	ELISA, WB
Recommended dilution:	WB: 1:500-1:2000
Image:	



mouse brain tissue were subjected to SDS PAGE followed by western blot with FNab03466(GIYD2 Antibody) at dilution of 1:600