

GH2 antibody

Product Information

| | |
|---------------|--|
| Catalog No.: | FNab03448 |
| Size: | 100µg |
| Form: | liquid |
| Purification: | Immunogen affinity purified |
| Purity: | ≥95% as determined by SDS-PAGE |
| Host: | Rabbit |
| Clonality: | polyclonal |
| Clone ID: | None |
| IsoType: | IgG |
| Storage: | PBS with 0.02% sodium azide and 50% glycerol pH 7.3, -20°C for 12 months(Avoid repeated freeze / thaw cycles.) |

Background

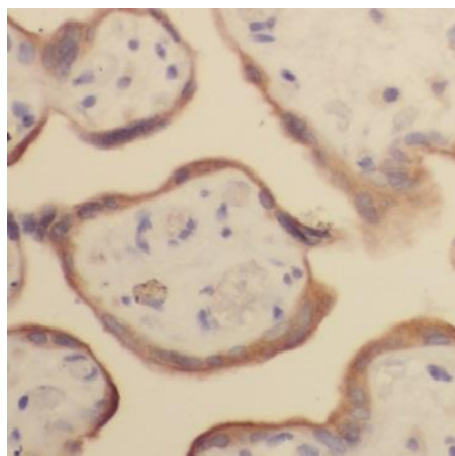
Plays an important role in growth control. Its major role in stimulating body growth is to stimulate the liver and other tissues to secrete IGF-1. It stimulates both the differentiation and proliferation of myoblasts. It also stimulates amino acid uptake and protein synthesis in muscle and other tissues.

Immunogen information

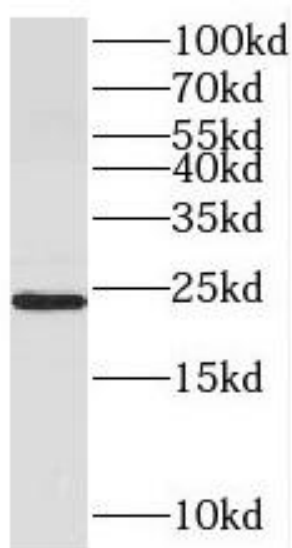
| | |
|--------------|---|
| Immunogen: | growth hormone 2 |
| Synonyms: | Growth hormone variant (GH-V) Growth hormone 2 Placenta-specific growth hormone GH2 |
| Observed MW: | 23-25 kDa |
| Uniprot ID : | P01242 |

Application

| | |
|-----------------------|-----------------------------------|
| Reactivity: | Human, Mouse, Rat |
| Tested Application: | ELISA, WB, IHC |
| Recommended dilution: | WB: 1:500-1:2000; IHC: 1:20-1:200 |
| Image: | |



Immunohistochemistry of paraffin-embedded human placenta using FNab03448(GH2 antibody) at dilution of 1:50



human placenta tissue were subjected to SDS PAGE followed by western blot with FNab03448(GH2 antibody) at dilution of 1:300